

2020 Annual Report



CONTENTS

| | Page |
|--|------|
| Chairman's Message | i |
| Corporate Information | iii |
| Organization Chart | iv |
| Directors' Report..... | 1 |
| Independent Auditors' Report..... | 3 |
| Statement of Financial Position | 6 |
| Statement of Profit or Loss and Other Comprehensive Income | 7 |
| Statement of Changes in Equity..... | 8 |
| Statement of Cash Flows..... | 9 |
| Notes to the Financial Statements | 11 |

CHAIRMAN'S MESSAGE

2020 Review

Cambodia government had earned widespread international praise for its handling of the Covid-19 pandemic and number of Covid-19 cases were very low with no fatalities as of 31 December 2020. Despite the very low number of Covid-19 cases, the economic fallout triggered by this global pandemic is looming large for Cambodia and hit hard on its main engines of growth in tourism, construction and garment industry. International tourist arrivals declined drastically due to travel restrictions and lockdowns causes Cambodia's tourism and hospitality sector to collapse and as such many tourism related businesses have closed down and jobs were lost. Foreign investment in the construction and real estate has slow down tremendously almost coming to a grinding halt. Garment export have declined significantly due to cancellation of orders as well as disruptions to the global supply chains.

In spite of the Covid-19 pandemic that had crippled many economic development in 2020, the Cambodian financial sector still managed to post sound growth in terms of loans and deposits. For the whole of 2020, the financial industry total assets grew to US\$59.4 billion with an increase of 15.7% from 2019. Outstanding loans grew by 14.8% to US\$37.3 billion and deposits increased by 15.4% to US\$33.8 billion. Even though Cambodia GDP is seen contracting in 2020 for the first time in over two decades, the banking sector has been stable and actively involved in supporting economic activities and in reducing the impact of the crisis on businesses and the poor in line with the government policies.

Financial Performance

We began 2020 with a view of uncertainty due to the spread of Covid-19 to many countries and it cast a long shadow on not just Cambodia economy but also on the global economy. Even with the challenges and the impact of Covid-19, with our strong foundation and operational resilience, we still managed to achieve a record net profit after tax of US\$648,177 ended 31 December 2020. Our total assets grow to US\$15.8 million and we see a strong growth in our loan portfolio to US\$11.24 million

2021 Outlook

After enduring a year-long of economic downturn which was felt much more severely in the tourism, hospitality, garment and construction sectors, there were signs that economic activity

is beginning to pick up until the start of the third community outbreak of Covid-19 since 20 February 2021.

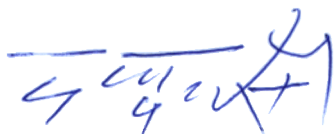
With the ongoing community outbreak which is the most severe till date, movement control and business control as well as several nationwide restrictions were put in place by the government. Many businesses might struggle to survive should the community spread prolonged and the turnaround of the economy will very much depends on how fast the inoculation program to get the majority of the population to be vaccinated.

With the impact of the current crisis and challenges that businesses are facing, we will continue to work closely with our customers to deal with this hard time together by restructuring their loans in order to maintain financial stability, support economic activity and easing the burden of our customers.

Acknowledgment

On behalf of the board, I would like to thank our management team and staff for their strong engagement and contributions in staying united and unwavering throughout this pandemic in their pursuit of excellence.

I am grateful to our customers and partners in their continued trust in doing business with us. We will continue to focus on our people in allowing us to be closer to our markets and standing right by our customers in helping them to weather this crisis in building their businesses and attaining their financial goals.

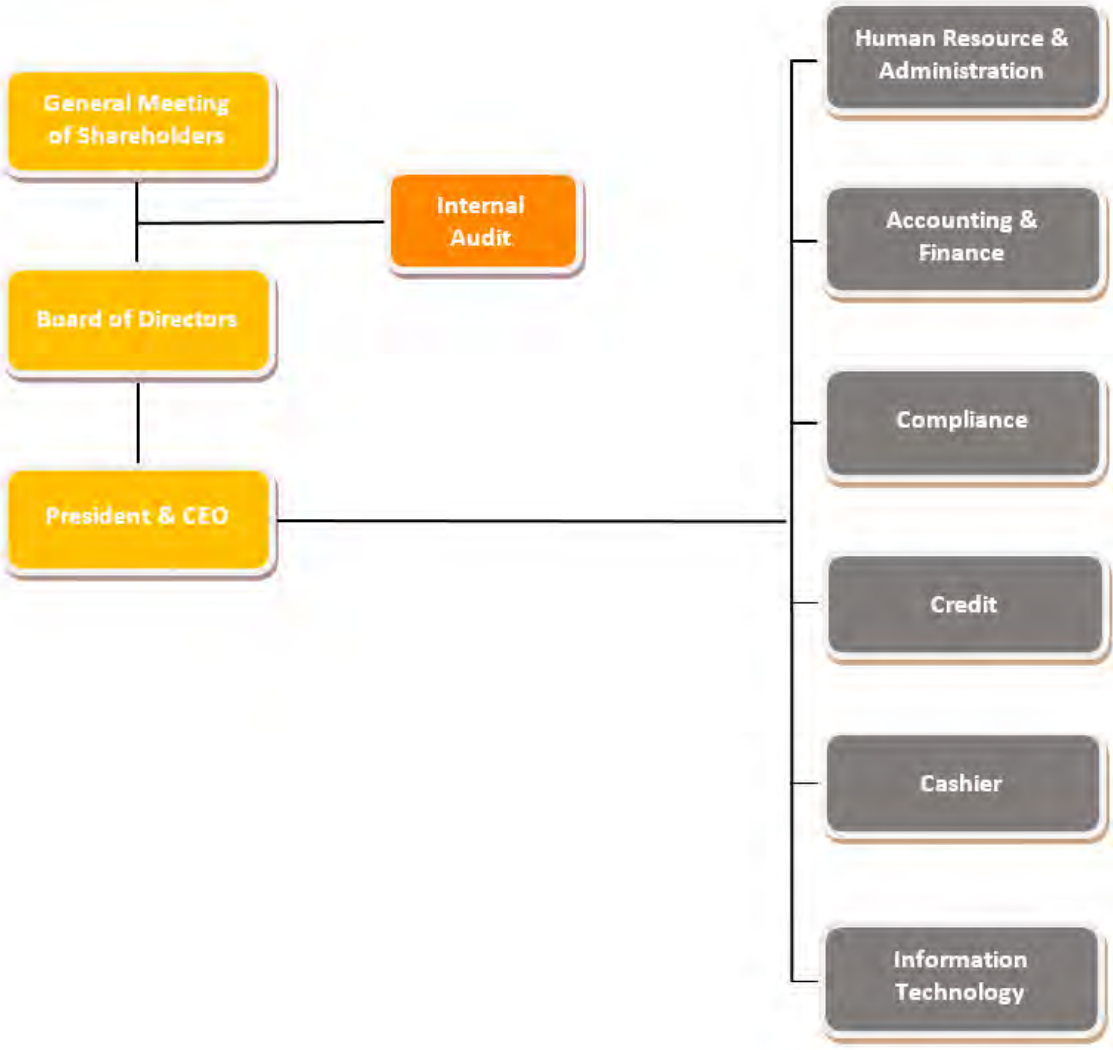
A handwritten signature in blue ink, appearing to read 'Kun Kay Hong', with a stylized flourish at the end.

Kun Kay Hong
Chairman
30 April 2021

CORPORATE INFORMATION

| | |
|-------------------|--|
| Shareholders | Kun Swee Tiong Andy Kun Swee Yi Diaz Kun Kay Hong |
| Registration No | 00011446 |
| Registered office | Office No. 294, Mao Tse Toung Blvd (245)., Sangkat Tomniubteuk, Khan Chamkarmorn, Phnom Penh, Cambodia |
| Head Office | Southern Capital Specialized Bank Plc, Phnom Penh, Cambodia |
| Principle Bankers | National Bank of Cambodia RHB Indochina Bank Hatha Kaksekar Limited LOLC (Cambodia) Plc. Sathapana Bank Plc. |
| Auditors | Crowe (KH) Co., Ltd. |

Organization Chart



SOUTHERN CAPITAL SPECIALIZED BANK PLC.

(Incorporated in Cambodia)

Registration No: 00011446

DIRECTORS' REPORT

The directors hereby submit the report and the audited financial statements of Southern Capital Specialized Bank PLC ("the Bank") for the financial year ended 31 December 2020.

DIRECTORS

The names of directors of the Bank who served during the financial year and up to the date of this report are as follows: -

Kun Swee Tiong Andy

Kun Swee Yi Diaz

Kun Kay Hong

DIRECTORS' RESPONSIBILITY IN RESPECT OF THE FINANCIAL STATEMENTS

The directors are responsible for the financial statements of the Bank to be properly drawn up so as to give a true and fair view of the financial position of the Bank as at 31 December 2020 and of its financial performance and cash flows for the financial year ended 31 December 2020. In the preparation of these financial statements, the directors are required to:

- (i) adopt appropriate accounting policies in compliance with Cambodian International Financial Reporting Standards ("CIFRSs") which are supported by reasonable and appropriate judgments and estimates and then apply them consistently;
- (ii) comply with the disclosure requirements CIFRSs, if there have been any departures in the interest of true and fair presentation, ensure that these have been appropriately disclosed, explained and quantified in the financial statements;
- (iii) maintain adequate accounting records and an effective system of internal controls;
- (iv) prepare the financial statements on a going concern basis unless it is inappropriate to assume that the Bank will continue its operations in the foreseeable future; and
- (v) control and direct effectively the Bank in all material decisions affecting its operations and performance and ascertain that such decisions and/or instructions have been properly reflected in the financial statements.

The directors confirm that the Bank has complied with the above requirements in preparing the financial statements of the Bank.

SOUTHERN CAPITAL SPECIALIZED BANK PLC.

(Incorporated in Cambodia)

Registration No: 00011446

DIRECTORS' REPORT

PREPARATION OF THE FINANCIAL STATEMENTS

In the preparation of the financial statements, the directors have taken account of the following matters:-

- (i) all material transfers to or from reserves or provisions during the financial year are disclosed in the financial statements;
- (ii) adequate allowance for impairment losses on receivables and other current and non-current assets, if required, has been made;
- (iii) known bad debts had been written off, if any;
- (iv) existing methods of valuation of assets or liabilities is not misleading or inappropriate;
- (v) there are no known circumstances that would render any amount stated in the financial statements to be misleading;
- (vi) there has not arisen in the interval between the end of the financial year and the date of this report any item, transaction or event of a material and unusual nature likely, in the opinion of the directors, to affect substantially the results of the operations of the Bank for the financial year in which this report is made;
- (vii) the results of the operations of the Bank during the financial year were not, in the opinion of the directors, substantially affected by any item, transaction or event of a material and unusual nature;
- (viii) no contingent or other liability of the Bank has become enforceable or is likely to become enforceable within the period of twelve months after the end of the financial year which, in the opinion of the directors, will or may substantially affect the ability of the Bank to meet its obligations when they fall due.

APPROVAL OF THE FINANCIAL STATEMENTS

The directors hereby approve the accompanying financial statements which give a true and fair view of the financial position of the Bank as at 31 December 2020, its financial performance and cash flows for the financial year then ended in accordance with CIFRSs.

Kun Swee Tiong Andy
President & CEO



INDEPENDENT AUDITORS' REPORT TO THE MEMBERS OF SOUTHERN CAPITAL SPECIALIZED BANK PLC.

(Incorporated in Cambodia)
Registration No: 00011446

REPORT ON THE AUDIT OF THE FINANCIAL STATEMENTS

Crowe (KH) Co., Ltd
(FKA Crowe Horwath (KH) Ltd)

Unit 4B, 4th floor, K1 Building,
#148, Mao Tse Toung Blvd
(St.245) Songkat ToulTompong 2
Khan Chomkarmon,
Phnom Penh
Kingdom of Cambodia
Main +855 23 216 717
www.crowe.com.kh

Opinion

We have audited the financial statements of Southern Capital Specialized Bank Plc. ("the Bank") which comprise the statement of financial position as at 31 December 2020 of the Bank, the statement of profit or loss and other comprehensive income, statement of changes in equity and statement of cash flows for the financial year then ended 31 December 2020, and a summary of significant accounting policies and other explanatory notes, as set out on pages 7 to 59.

In our opinion, the accompanying financial statements give a true and fair view of the financial position of the Bank as at 31 December 2020, and of its financial performance and its cash flow for the financial year then ended in accordance with Cambodian International Financial Reporting Standards ("CIFRSs").

Basis of Opinion

We conducted our audit in accordance with Cambodian International Standards on Auditing ("CISA"). Our responsibilities under those standards are further described in *the Auditors' Responsibilities for the Audit of the Financial Statements* section of our report. We believe that the audit evidence we have obtained is sufficient and appropriate to provide a basis for our opinion.

Independence and Other Ethical Responsibilities

We are independent of the Bank in accordance with the ethical requirements that are relevant to our audit of the financial statements in Cambodia, and we have fulfilled our other ethical responsibilities in accordance with these requirements.

Information Other than the Financial Statements and Auditors' Report Thereon

The directors of the Bank are responsible for the other information. The other information comprises the Directors' Report, but does not include the financial statements of the Bank and our auditors' report thereon.

Our opinion on the financial statements of the Bank does not cover the Directors' Report and we do not express any form of assurance conclusion thereon.

In connection with our audit of the financial statements of the Bank, our responsibility is to read the Directors' Report and, in doing so, consider whether the Directors' Report is materially inconsistent with the financial statements of the Bank or our knowledge obtained in the audit or otherwise appears to be materially misstated.

If, based on the work we have performed, we conclude that there is a material misstatement of the Directors' Report, we are required to report that fact. We have nothing to report in this regard.



INDEPENDENT AUDITORS' REPORT TO THE DIRECTORS OF SOUTHERN CAPITAL SPECIALIZED BANK PLC. (CONT'D)

(Incorporated in Cambodia)
(Registration No: 00011446)

Responsibilities of Directors for the Financial Statements

The directors of the Bank are responsible for the preparation of financial statements that give a true and fair view in accordance with CIFRSs. The directors are also responsible for such internal controls as the directors determine are necessary to enable the preparation of financial statements that are free from material misstatement, whether due to fraud or error.

In preparing the financial statements of the Bank, the directors are responsible for assessing the Bank's ability to continue as a going concern, disclosing, as applicable, matters related to going concern and using the going concern basis of accounting unless the directors either intend to liquidate the Bank or to cease operations, or have no realistic alternative but to do so.

Auditors' Responsibilities for the Audit of the Financial Statements

Our objectives are to obtain reasonable assurance about whether the financial statements of the Bank as a whole are free from material misstatement, whether due to fraud or error, and to issue an auditors' report that includes our opinion. Reasonable assurance is a high level of assurance, but is not a guarantee that an audit conducted in accordance with CISA will always detect a material misstatement when it exists. Misstatements can arise from fraud or error and are considered material if, individually or in the aggregate, they could reasonably be expected to influence the economic decisions of users taken on the basis of these financial statements.

As a part of an audit in accordance with CISA, we exercise professional judgement and maintain professional skepticism throughout the audit. We also:-

- identify and assess the risks of material misstatement of the financial statements of the Bank, whether due to fraud or error, design and perform audit procedures responsive to those risks, and obtain audit evidence that is sufficient and appropriate to provide a basis for our opinion. The risk of not detecting a material misstatement resulting from fraud is higher than for one resulting from error, as fraud may involve collusion, forgery, intentional omissions, misrepresentations, or the override of internal control.
- obtain an understanding of internal control relevant to the audit in order to design audit procedures that are appropriate in the circumstances, but not for the purpose of expressing an opinion on the effectiveness of the Bank's internal control.
- evaluate the appropriateness of accounting policies used and the reasonableness of accounting estimates and related disclosures made by the directors.



INDEPENDENT AUDITORS' REPORT TO THE DIRECTORS OF SOUTHERN CAPITAL SPECIALIZED BANK PLC. (CONT'D)

(Incorporated in Cambodia)
(Registration No: 00011446)

Auditors' Responsibilities for the Audit of the Financial Statements (Cont'd)

- conclude on the appropriateness of the directors' use of the going concern basis of accounting and, based on the audit evidence obtained, whether a material uncertainty exists related to events or conditions that may cast significant doubt on the Bank's ability to continue as a going concern. If we conclude that a material uncertainty exists, we are required to draw attention in our auditors' report to the related disclosures in the financial statements of the Bank or, if such disclosures are inadequate, to modify our opinion. Our conclusions are based on the audit evidence obtained up to the date of our auditors' report. However, future events or conditions may cause the Bank to cease to continue as a going concern.
- evaluate the overall presentation, structure and content of the financial statements of the Bank, including the disclosures, and whether the financial statements of the Bank represent the underlying transactions and events in a manner that achieves fair presentation.

We communicate with the directors regarding, among other matters, the planned scope and timing of the audit and significant audit findings, including any significant deficiencies in internal control that we identify during our audit.

Other Matters

Our audit was conducted for the purpose of forming an opinion on the financial statements denominated in the functional currency of United States Dollar ("USD"). The translation of the financial statements from USD into Khmer Riel ("KHR") using the closing and average rates as at 31 December 2020 and for the year then ended, respectively, is presented for the purpose of additional analysis and it does not form an integral part of the audited financial statements. The translation has not been subjected to the auditing procedures applied in the audit of the financial statements and, accordingly, we do not express any opinion on it.



Crowe (KH) Co., Ltd
Onn Kien Hoe

Director

SOUTHERN CAPITAL SPECIALIZED BANK PLC.

(Incorporated in Cambodia)

Registration No: 00011446

**STATEMENT OF FINANCIAL POSITION
FOR THE FINANCIAL YEAR ENDED 31 DECEMBER 2020**

| | Note | 31.12.2020 USD | 31.12.2019 USD | 31.12.2020 KHR'000 | 31.12.2019 KHR'000 |
|---|-------|-------------------|-------------------|-----------------------|-----------------------|
| ASSETS | | | | | |
| Cash on hand | 5 | 1,315 | 7,752 | 5,319 | 31,589 |
| Deposits and placements with banks and other financial institutions | 6 | 3,517,957 | 4,758,991 | 14,230,136 | 19,392,888 |
| Loans and advances | 7 | 11,240,312 | 9,152,321 | 45,467,062 | 37,295,708 |
| Other assets | 8 | 162,794 | 176,674 | 658,502 | 719,947 |
| Statutory deposits with National Bank of Cambodia ("NBC") | 9 | 750,000 | 750,000 | 3,033,750 | 3,056,250 |
| Right-of-use assets | 10 | 6,450 | 21,930 | 26,090 | 89,365 |
| Equipment | 11 | 67,955 | 92,417 | 274,878 | 376,599 |
| Deferred tax assets | 21(a) | 62,335 | 86,335 | 252,145 | 351,815 |
| TOTAL ASSETS | | 15,809,118 | 15,046,420 | 63,947,882 | 61,314,161 |
| LIABILITIES | | | | | |
| Other liabilities | 12 | 43,204 | 38,335 | 174,760 | 156,215 |
| Lease liabilities | 23(a) | - | 15,348 | - | 62,543 |
| Income tax payable | 21(b) | 137,163 | 12,163 | 554,824 | 49,564 |
| TOTAL LIABILITIES | | 180,367 | 65,846 | 729,584 | 268,322 |
| EQUITY | | | | | |
| Share capital | 13 | 15,000,000 | 15,000,000 | 60,000,000 | 60,000,000 |
| Retained profits/ (Accumulated losses) | 14 | 628,751 | (19,426) | 2,544,326 | (77,553) |
| Translation reserve | | - | - | 673,972 | 1,123,392 |
| TOTAL EQUITY | | 15,628,751 | 14,980,574 | 63,218,298 | 61,045,839 |
| TOTAL LIABILITIES AND EQUITY | | 15,809,118 | 15,046,420 | 63,947,882 | 61,314,161 |

SOUTHERN CAPITAL SPECIALIZED BANK PLC.

(Incorporated in Cambodia)

Registration No: 00011446

**STATEMENT OF PROFIT OR LOSS AND OTHER COMPREHENSIVE INCOME
FOR THE FINANCIAL YEAR ENDED 31 DECEMBER 2020**

| | Note | 2020 USD | 2019 USD | 2020 KHR'000 | 2019 KHR'000 |
|--|-------|-------------|-------------|-----------------|-----------------|
| INTEREST INCOME | 15 | 1,107,849 | 954,396 | 4,481,249 | 3,867,213 |
| NON-INTEREST INCOME | | 74,999 | 30,628 | 303,371 | 124,105 |
| NET INCOME | | 1,182,848 | 985,024 | 4,784,620 | 3,991,318 |
| PERSONNEL COSTS | 16 | (463,406) | (416,914) | (1,874,477) | (1,689,336) |
| DEPRECIATION AND AMORTISATION | 17 | (40,324) | (46,160) | (163,111) | (187,040) |
| ADMINISTRATION AND GENERAL EXPENSES | 18 | (275,641) | (216,340) | (1,114,968) | (876,610) |
| OPERATING PROFIT BEFORE IMPAIRMENT LOSSES | | 403,477 | 305,610 | 1,632,064 | 1,238,332 |
| LOSS ALLOWANCE FOR EXPECTED CREDIT LOSSES ("ECL") :- | | | | | |
| - Loans and advances | 19 | 372,000 | (201,706) | 1,504,740 | (817,313) |
| - Others | 20 | 44,452 | 2,222 | 179,808 | 9,004 |
| PROFIT BEFORE TAX | | 819,929 | 106,126 | 3,316,612 | 430,023 |
| INCOME TAX EXPENSE | 21(c) | (171,752) | (41,253) | (694,733) | (167,153) |
| PROFIT AFTER TAX | | 648,177 | 64,873 | 2,621,879 | 262,870 |
| OTHER COMPREHENSIVE INCOME | | - | - | - | - |
| TOTAL COMPREHENSIVE INCOME FOR THE FINANCIAL YEAR | | 648,177 | 64,873 | 2,621,879 | 262,870 |

SOUTHERN CAPITAL SPECIALIZED BANK PLC.

(Incorporated in Cambodia)

Registration No: 00011446

**STATEMENT OF CHANGES IN EQUITY
FOR THE FINANCIAL YEAR ENDED 31 DECEMBER 2020**

| | Note | Share Capital USD | Retained Profits/ (Accumulated Losses) USD | Total USD |
|---|------|-------------------------|--|--------------|
| Balance at 1.1.2019 | | 15,000,000 | (84,299) | 14,915,701 |
| Total comprehensive income for the financial year | | - | 64,873 | 64,873 |
| Transfer to regulatory reserve | | - | - | - |
| Balance at 31.12.2019/1.1.2020 | | 15,000,000 | (19,426) | 14,980,574 |
| Total comprehensive income for the financial year | | - | 648,177 | 648,177 |
| Balance at 31.12.2020 | | 15,000,000 | 628,751 | 15,628,751 |

| | Note | Share Capital KHR'000 | Retained Profits/ (Accumulated Losses) KHR'000 | Translation reserve KHR'000 | Total KHR'000 |
|---|------|-----------------------------|--|-----------------------------------|------------------|
| Balance at 1.1.2019 | | 60,000,000 | (340,423) | 271,711 | 59,931,288 |
| Total comprehensive income for the financial year | | - | 262,870 | - | 262,870 |
| Translation difference | | - | - | 851,681 | 851,681 |
| Balance at 31.12.2019/1.1.2020 | | 60,000,000 | (77,553) | 1,123,392 | 61,045,839 |
| Total comprehensive income for the financial year | | - | 3,271,815 | - | 3,271,815 |
| Translation difference | | - | - | (449,422) | (449,422) |
| Balance at 31.12.2020 | | 60,000,000 | 3,194,262 | 673,970 | 63,868,232 |

SOUTHERN CAPITAL SPECIALIZED BANK PLC.

(Incorporated in Cambodia)

Registration No: 00011446

STATEMENT OF CASH FLOWS**FOR THE FINANCIAL YEAR ENDED 31 DECEMBER 2020**

| | Note | 2020 USD | 2019 USD | 2020 KHR'000 | 2019 KHR'000 |
|---|-------|--------------------|------------------|--------------------|------------------|
| CASH FLOWS FOR OPERATING ACTIVITIES | | | | | |
| Profit before tax | | 819,929 | 106,126 | 3,316,612 | 430,023 |
| Adjustments for:- | | | | | |
| Depreciation of equipment | | | | | |
| | 11 | 24,844 | 30,680 | 100,494 | 122,277 |
| Depreciation of right-of-use assets | 10 | 15,480 | 15,480 | 62,617 | 64,763 |
| Loss allowance for ECL: | | | | | |
| - loans and advances | | (372,000) | 201,706 | (1,504,740) | 817,313 |
| - deposits and placements with banks and other financial institutions | | (44,452) | (2,222) | (179,808) | (9,064) |
| Interest expense on lease liabilities | 23(a) | 1,800 | 1,800 | 7,281 | 7,293 |
| Operating profit before working capital changes | | 445,601 | 353,570 | 1,802,456 | 1,432,605 |
| Working capital changes: | | | | | |
| - loans and advances | | (1,715,991) | (213,153) | (6,941,184) | (868,598) |
| - other assets | | 13,880 | (37,865) | 56,145 | (154,300) |
| - other liabilities | | 4,869 | (251,328) | 19,695 | (1,024,162) |
| CASH FLOWS FOR OPERATION | | (1,251,641) | (148,776) | (5,062,888) | (614,455) |
| Income tax paid | | (22,752) | (11,705) | (92,032) | (47,429) |
| NET CASH FOR OPERATING ACTIVITIES | | (1,274,393) | (160,481) | (5,154,920) | (661,884) |

SOUTHERN CAPITAL SPECIALIZED BANK PLC.

(Incorporated in Cambodia)

Registration No: 00011446

STATEMENT OF CASH FLOWS**FOR THE FINANCIAL YEAR ENDED 31 DECEMBER 2020 (CONT'D)**

| | Note | 2020 USD | 2019 USD | 2020 KHR'000 | 2019 KHR'000 |
|---|-------|--------------------|------------------|--------------------|-------------------|
| CASH FLOWS (FOR)/FROM INVESTING ACTIVITIES | | | | | |
| Purchase of equipment | | (382) | (46,950) | (1,545) | (191,322) |
| Proceeds from disposal of equipment | | - | 5,063 | - | 20,628 |
| (Placement)/Withdrawal of fixed deposits with tenure more than 3 months | | (1,032,302) | 1,050,000 | (4,175,662) | 4,254,600 |
| NET CASH (FOR)/FROM INVESTING ACTIVITIES | | (1,032,684) | 1,008,113 | (4,177,207) | 4,083,906 |
| CASH FLOWS FOR FINANCING ACTIVITIES | | | | | |
| Repayment of lease liabilities | 23(a) | (17,148) | (15,972) | (69,364) | (64,718) |
| NET CASH FOR FINANCING ACTIVITIES | | (17,148) | (15,972) | (69,364) | (64,718) |
| NET (DECREASE)/INCREASE IN CASH AND CASH EQUIVALENTS | | (2,324,225) | 831,660 | (9,401,491) | 3,357,304 |
| CASH AND CASH EQUIVALENTS AT BEGINNING OF THE FINANCIAL YEAR | | 4,514,645 | 3,682,985 | 18,397,178 | 14,798,230 |
| EFFECT OF CURRENCY TRANSLATION | | - | - | (135,438) | 241,644 |
| CASH AND CASH EQUIVALENTS AT END OF THE FINANCIAL YEAR | 23(b) | 2,190,420 | 4,514,645 | 8,860,249 | 18,397,178 |

SOUTHERN CAPITAL SPECIALIZED BANK PLC.

(Incorporated in Cambodia)

Registration No: 00011446

NOTES TO THE FINANCIAL STATEMENTS FOR THE FINANCIAL YEAR ENDED 31 DECEMBER 2020

1. GENERAL INFORMATION

Southern Capital Specialized Bank Plc. (“the Bank”) was incorporated in Cambodia on 26 April 2016 under Registration No. 00011446. On 28 July 2016, the National Bank of Cambodia (“NBC”) issued a license to conduct commercial banking business for an indefinite period.

Registered office: Office No.294, Moa Tse Toung Blvd (245), Sangkat Tomnoubteuk, Khan Chamkarmorn, Phnom Penh.

Principle place of business: Office No.294, Moa Tse Toung Blvd (245), Sangkat Tomnoubteuk, Khan Chamkarmorn, Phnom Penh.

The financial statements were authorised for issue by the director’s on [31 March 2021].

2. PRINCIPAL ACTIVITIES

The Bank is principally engaged in general banking business and the provision of related financial services.

There have been no significant changes in the nature of these activities during the financial year.

3. BASIS OF PREPARATION

The financial statements of the Bank are prepared under the historical cost convention and modified to include other bases of valuation as disclosed in other sections under significant accounting policies, and in compliance with Cambodian International Financial Reporting Standards (“CIFRSs”).

(a) Standards and interpretations that are effective for the current financial year

During the current financial year, the Bank has adopted the following new accounting standards and interpretations:-

CIFRSs and/or IC Interpretations (Including The Consequential Amendments)

Amendments to CIFRS 3: Definition of a Business

Amendments to CIFRS 4: Extension of the Temporary Exemption from Applying CIFRS 9

Amendments to CIFRS 9, CIAS 39 and CIFRS 7: Interest Rate Benchmark Reform

Amendments to CIFRS 16: COVID-19-Related Rent Concessions

Amendments to CIAS 1 and CIAS 8: Definition of Material

Amendments to References to the Conceptual Framework in CIFRS Standards

The adoption of the above accounting standards and/or interpretations (including the consequential amendments, if any) did not have any material impact on the Bank’s financial statements.

SOUTHERN CAPITAL SPECIALIZED BANK PLC.

(Incorporated in Cambodia)

Registration No: 00011446

NOTES TO THE FINANCIAL STATEMENTS FOR THE FINANCIAL YEAR ENDED 31 DECEMBER 2020

3. BASIS OF PREPARATION (CONT'D)

(b) New Accounting Standards for Application in Future Periods

The Bank has not applied in advance the following accounting standards and/or interpretation(s) (including the consequential amendments, if any) that have been issued by the National Accounting Council ("NAC") but are not yet effective for the current financial year:-

| CIFRSs and/or IC Interpretations (Including The Consequential Amendments) | Effective Date |
|---|-----------------------|
| CIFRS 17 Insurance Contracts | 1 January 2023 |
| Amendments to CIFRS 3: Reference to the Conceptual Framework | 1 January 2022 |
| Amendments to CIFRS 9, CIAS 39, CIFRS 7, CIFRS 4 and CIFRS 16: Interest Rate Benchmark Reform – Phase 2 | 1 January 2021 |
| Amendments to CIFRS 10 and CIAS 28: Sale or Contribution of Assets between an Investor and its Associate or Joint Venture | Deferred |
| Amendments to CIFRS 16: COVID-19-Related Rent Concessions | 1 June 2020 |
| Amendments to CIFRS 17 Insurance Contracts | 1 January 2023 |
| Amendments to CIAS 1: Classification of Liabilities as Current or Non-current | 1 January 2023 |
| Amendments to CIAS 16: Property, Plant and Equipment – Proceeds before Intended Use | 1 January 2022 |
| Amendments to CIAS 37: Onerous Contracts – Cost of Fulfilling a Contract | 1 January 2022 |
| Annual Improvements to CIFRS Standards 2018 – 2020 | 1 January 2022 |

The adoption of the above accounting standards and/or interpretations (including the consequential amendments, if any) is expected to have no material impact on the financial statements of the Bank upon their initial application.

SOUTHERN CAPITAL SPECIALIZED BANK PLC.

(Incorporated in Cambodia)

Registration No: 00011446

NOTES TO THE FINANCIAL STATEMENTS FOR THE FINANCIAL YEAR ENDED 31 DECEMBER 2020

4. SIGNIFICANT ACCOUNTING POLICIES

4.1 CRITICAL ACCOUNTING ESTIMATES AND JUDGEMENTS

Key Sources of Estimation Uncertainty

Management believes that there are no key assumptions made concerning the future, and other key sources of estimation uncertainty at the reporting date, that have a significant risk of causing a material adjustment to the carrying amounts of assets and liabilities within the next financial year other than as disclosed below:-

(a) Impairment of Loan and Advances

The loss allowances for loan to customer are based on assumptions about risk of default and expected loss rates. The Bank uses judgement in making these assumptions and selecting appropriate inputs to the impairment calculation, based on the past payment trends, existing market conditions as well as forward-looking estimates at the end of each reporting period.

4.1 CRITICAL ACCOUNTING ESTIMATES AND JUDGEMENTS (CONT'D)

(b) Income Tax

There are certain transactions and computations for which the ultimate tax determination may be different from the initial estimate. The Bank recognises tax liabilities based on its understanding of the prevailing tax laws and estimates of whether such taxes will be due in the ordinary course of business. Where the final outcome of these matters is different from the amounts that were initially recognised, such difference will impact the income tax expense and deferred tax balances in the period in which such determination is made.

The principal accounting policies adopted in the preparation of the financial statements are set out below. These accounting policies have been consistently applied by the Bank during the year.

Critical Judgements Made in Applying Accounting Policies

Management believes that there are no instances of application of critical judgement in applying the Bank's accounting policies which will have a significant effect on the amounts recognised in the financial statements

SOUTHERN CAPITAL SPECIALIZED BANK PLC.

(Incorporated in Cambodia)

Registration No: 00011446

NOTES TO THE FINANCIAL STATEMENTS FOR THE FINANCIAL YEAR ENDED 31 DECEMBER 2020

4. SIGNIFICANT ACCOUNTING POLICIES (CONT'D)

4.2 FUNCTIONAL AND FOREIGN CURRENCIES

(a) Functional and Presentation Currency

The financial statements of the Bank are presented in the currency of the primary economic environment in which the Bank operates, which is the functional currency.

The financial statements are presented in US dollar ("USD"), which is the Bank's functional and presentation currency.

For the sole regulatory purpose of complying with the National Bank of Cambodia's Prakas No. B7-07-164 dated 13 December 2007, a translation to Khmer Riel ("KHR") is provided for the statement of financial position, the statement of profit or loss and other comprehensive income, the statement of changes in equity, the statement of cash flows and the notes to the financial statements as of and for the year ended 31 December 2020 using the official rates of exchange published by the National Bank of Cambodia as at the reporting dates. Such translation amounts are unaudited and should not be construed as representations that the USD amounts represent, or have been or could be, converted into Khmer Riel at that or any other rate. Amounts in these financial statements expressed in Khmer Riel are translations of US Dollars amounts at rates set by the National Bank of Cambodia.

The financial statements are presented in KHR based on the following applicable exchange rates per USD1:

| | 2020 | 2019 |
|---------------------------|-------|-------|
| Opening rate | 4,075 | 4,018 |
| Closing rate | 4,045 | 4,075 |
| Average rate for the year | 4,045 | 4,052 |

Amounts in the financial statements have been rounded off to the nearest dollar and nearest thousand for USD and KHR amounts, respectively.

(b) Foreign Currencies Transactions and Balances

Transactions in currencies other than the Bank's functional currency (foreign currencies) are recorded in the functional currency using the exchange rates prevailing at the date of the transactions. At the end of each reporting period, monetary items denominated in foreign currencies are translated at the rates prevailing at the end of each reporting period. Non-monetary items carried at the fair value that are denominated in foreign currencies are translated at the rates prevailing on the date when the fair value was determined. Non-monetary items that are measured in the terms of historical cost in a foreign currency are not translated.

SOUTHERN CAPITAL SPECIALIZED BANK PLC.

(Incorporated in Cambodia)

Registration No: 00011446

NOTES TO THE FINANCIAL STATEMENTS FOR THE FINANCIAL YEAR ENDED 31 DECEMBER 2020

4. SIGNIFICANT ACCOUNTING POLICIES (CONT'D)

4.3 EQUIPMENT

All items of equipment are initially measured at cost. Cost includes expenditures that are directly attributable to the acquisition of the asset and other cost directly attributable to bringing the asset to working condition for its intended use. Freehold land is stated at cost less impairment losses, if any and is not depreciated.

Subsequent to initial recognition, equipment is stated at cost less accumulated depreciation and any impairment losses.

Subsequent costs are included in the asset's carrying amount or recognised as a separate asset, as appropriate, only when it is probable that future economic benefits associated with the item will flow to the Bank and the cost of the item can be measured reliably. The carrying amount of parts that are replaced is derecognised. The costs of day-to-day servicing of equipment are recognised in profit or loss as incurred.

Depreciation of equipment are charged to profit or loss and is calculated under the straight-line method and declining balance method to write off the depreciable amount of the assets over their estimated useful lives. Depreciation of an asset does not cease when the asset becomes idle or is retired from active use unless the asset is fully depreciated. The principal annual rates used for this purpose are:-

| | |
|------------------------|-----|
| Leasehold improvement | 20% |
| Furniture and fixtures | 25% |
| Computer equipment | 50% |
| Equipment and others | 20% |
| Motor vehicles | 25% |

The residual values, useful lives and depreciation method are reviewed at the end of each reporting period to ensure that the amounts, method and periods of depreciation are consistent with previous estimates and the expected pattern of consumption of the future economic benefits embodied in the terms of equipment.

Subsequent costs are included in the asset's carrying amount or recognised as a separate asset, as appropriate, only when the cost is incurred and it is probable that the future economic benefits associated with the asset will flow to the Bank and the cost of the asset can be measured reliably. The carrying amount of parts that are replaced is derecognised. The costs of the day-to-day servicing of equipment are recognised in profit or loss as incurred. Cost also comprises the initial estimate of dismantling and removing the asset and restoring the site on which it is located for which the Bank is obligated to incur when the asset is acquired, if applicable.

An item of equipment is derecognised upon disposal or when no future economic benefits are expected from its use or disposal. Any gain or loss arising on derecognition of the asset is included in profit or loss.

SOUTHERN CAPITAL SPECIALIZED BANK PLC.

(Incorporated in Cambodia)

Registration No: 00011446

NOTES TO THE FINANCIAL STATEMENTS FOR THE FINANCIAL YEAR ENDED 31 DECEMBER 2020

4. SIGNIFICANT ACCOUNTING POLICIES (CONT'D)

4.4 INTANGIBLE ASSETS

Intangible assets represent the initial costs incurred in obtaining computer software, and it is classified in equipment.

Following initial recognition, intangible assets are stated at cost less accumulated amortisation and any accumulated impairment losses.

Intangible assets are assessed to have finite useful lives and are amortised over the license period using declining balance method. The intangible assets are also assessed for impairment whenever there is an indication that they may be impaired. The amortisation period and method are reviewed at least at the end of each reporting period.

Intangible assets are amortised as below:

| | |
|----------|-----|
| Software | 50% |
|----------|-----|

4.5 FINANCIAL INSTRUMENTS

Financial assets and financial liabilities are recognised in the statements of financial position when the Bank has become a party to the contractual provisions of the instruments.

Financial instruments are classified as financial assets, financial liabilities or equity instruments in accordance with the substance of the contractual arrangement and their definitions in CIAS 32. Interest, dividends, gains and losses relating to a financial instrument classified as a liability are reported as an expense or income. Distributions to holders of financial instruments classified as equity are charged directly to equity.

Financial instruments are offset when the Bank has a legally enforceable right to offset and intends to settle either on a net basis or to realise the asset and settle the liability simultaneously.

A financial instrument is recognised initially at its fair value (other than trade receivables without significant financing component which are measured at transaction price as defined in CIFRS 15 – Revenue from Contracts with Customers at inception). Transaction costs that are directly attributable to the acquisition or issue of the financial instrument (other than a financial instrument at fair value through profit or loss) are added to/deducted from the fair value on initial recognition, as appropriate. Transaction costs on the financial instrument at fair value through profit or loss are recognised immediately in profit or loss.

Financial instruments recognised in the statements of financial position are disclosed in the individual policy statement associated with each item.

SOUTHERN CAPITAL SPECIALIZED BANK PLC.

(Incorporated in Cambodia)

Registration No: 00011446

NOTES TO THE FINANCIAL STATEMENTS FOR THE FINANCIAL YEAR ENDED 31 DECEMBER 2020

4. SIGNIFICANT ACCOUNTING POLICIES (CONT'D)

4.5 FINANCIAL INSTRUMENTS (CONT'D)

(a) Financial assets

All recognised financial assets are measured subsequently in their entirety at either amortised cost or fair value through profit or loss, or other comprehensive income, depending on the classification of the financial assets.

Debt instrument

(i) Amortised cost

The financial asset is held for collection of contractual cash flows where those cash flows represent solely payments of principal and interest. Interest income is recognised by applying the effective interest rate to the gross carrying amount of the financial asset. When the asset has subsequently become credit-impaired, the interest income is recognised by applying the effective interest rate to the amortised cost of the financial asset.

The effective interest method is a method of calculating the amortised cost of a financial asset and of allocating interest income over the relevant period. The effective interest rate is the rate that discounts estimated future cash receipts (including all fees and points paid or received that form an integral part of the effective interest rate, transaction costs and other premiums or discounts), excluding expected credit losses, through the expected life of the financial asset or a shorter period (where appropriate).

(ii) Fair Value through Other Comprehensive Income

The financial asset is held for both collecting contractual cash flows and selling the financial asset, where the asset's cash flows represent solely payments of principal and interest. Movements in the carrying amount are taken through other comprehensive income and accumulated in the fair value reserve, except for the recognition of impairment, interest income and foreign exchange difference which are recognised directly in profit or loss. Interest income is calculated using the effective interest rate method.

(iii) Fair Value through Profit or Loss

All other financial assets that do not meet the criteria for amortised cost or fair value through other comprehensive income are measured at fair value through profit or loss.

The Bank reclassifies debt instruments when and only when its business model for managing those assets change.

SOUTHERN CAPITAL SPECIALIZED BANK PLC.

(Incorporated in Cambodia)

Registration No: 00011446

NOTES TO THE FINANCIAL STATEMENTS FOR THE FINANCIAL YEAR ENDED 31 DECEMBER 2020

4. SIGNIFICANT ACCOUNTING POLICIES (CONT'D)

4.5 FINANCIAL INSTRUMENTS (CONT'D)

(a) Financial assets (Cont'd)

Equity Investment

All equity investments are subsequent measured at fair value with gains and losses recognised in profit or loss except where the Bank has elected to present the subsequent changes in fair value in other comprehensive income and accumulated in the fair value reserve at initial recognition.

The designation at fair value through other comprehensive income is not permitted if the equity investment is either held for trading or is designated to eliminate or significantly reduce a measurement or recognition inconsistency that would otherwise arise.

Dividend income from this category of financial assets is recognised in profit or loss when the Bank's right to receive payment is established unless the dividends clearly represent a recovery of part of the cost of the equity investments.

(b) Financial liabilities

(i) Financial Liabilities at Fair Value through Profit or Loss

Fair value through profit or loss category comprises financial liabilities that are either held for trading or are designated to eliminate or significantly reduce a measurement or recognition inconsistency that would otherwise arise. The changes in fair value of these financial liabilities are recognised in profit or loss.

(ii) Other Financial Liabilities

Other financial liabilities are subsequently measured at amortised cost using the effective interest method.

The effective interest method is a method of calculating the amortised cost of a financial liability and of allocating interest expense over the relevant period. The effective interest rate is the rate that exactly discounts estimated future cash payments (including all fees and points paid or received that form an integral part of the effective interest rate, transaction costs and other premiums or discounts), through the expected life of the financial liability or a shorter period (where appropriate).

SOUTHERN CAPITAL SPECIALIZED BANK PLC.

(Incorporated in Cambodia)

Registration No: 00011446

NOTES TO THE FINANCIAL STATEMENTS FOR THE FINANCIAL YEAR ENDED 31 DECEMBER 2020

4. SIGNIFICANT ACCOUNTING POLICIES (CONT'D)

4.5 FINANCIAL INSTRUMENTS (CONT'D)

(c) Equity Instruments

Equity instruments classified as equity are measured initially at cost and are not remeasured subsequently.

Ordinary shares are classified as equity and recorded at the proceeds received, net of directly attributable transaction costs.

Dividends on ordinary shares are recognised as liabilities when approved for appropriation.

(d) Derecognition

A financial asset or part of it is derecognised when, and only when, the contractual rights to the cash flows from the financial asset expire or when it transfers the financial asset and substantially all the risks and rewards of ownership of the asset to another entity. On derecognition of a financial asset measured at amortised cost, the difference between the carrying amount of the asset and the sum of the consideration received and receivable is recognised in profit or loss. In addition, on derecognition of a debt instrument classified as fair value through other comprehensive income, the cumulative gain or loss previously accumulated in the fair value reserve is reclassified from equity to profit or loss. In contrast, there is no subsequent reclassification of the fair value reserve to profit or loss following the derecognition of an equity investment.

A financial liability or a part of it is derecognised when, and only when, the obligation specified in the contract is discharged or cancelled or expires. On derecognition of a financial liability, the difference between the carrying amount of the financial liability extinguished or transferred to another party and the consideration paid, including any non-cash assets transferred or liabilities assumed, is recognised in profit or loss.

4.6 CASH AND CASH EQUIVALENTS

Cash and cash equivalents comprise cash in hand, bank balances, demand deposits, and short-term, highly liquid investments that are readily convertible to known amounts of cash and which are subject to an insignificant risk of changes in value with original maturity periods of three months or less.

4.7 STATUTORY DEPOSITS WITH NATIONAL BANK OF CAMBODIA

Statutory deposits represent mandatory reserve deposits and cash maintained with the National Bank of Cambodia in compliance with the Law on Banking and Financial Institutions ("LBF") and are not available to finance the Bank's day to day operations and hence are not considered as part of cash and cash equivalents for the purpose of cash flow statement.

SOUTHERN CAPITAL SPECIALIZED BANK PLC.

(Incorporated in Cambodia)

Registration No: 00011446

NOTES TO THE FINANCIAL STATEMENTS FOR THE FINANCIAL YEAR ENDED 31 DECEMBER 2020

4. SIGNIFICANT ACCOUNTING POLICIES (CONT'D)

4.8 IMPAIRMENT

(a) Impairment of Financial Assets

The Bank recognises a loss allowance for expected credit losses ("ECL") on investments in debt instruments that are measured at amortised cost and at fair value through other comprehensive income.

The expected credit loss is estimated as the difference between all contractual cash flows that are due to the Bank in accordance with the contract and all the cash flows that the Bank expects to receive, discounted at the original effective interest rate.

12-month expected credit loss are the portion of lifetime expected credit loss that result from default events on a financial instrument that are possible within the 12 months after the reporting date. Financial instruments for which 12-month expected credit loss are recognised are referred to as 'Stage 1 financial instruments'. Financial instruments allocated to Stage 1 have not undergone a significant increase in credit risk since initial recognition and are not credit-impaired.

Lifetime expected credit loss are the expected credit loss that result from all possible default events over the expected life of the financial instrument or the maximum contractual period of exposure. Financial instruments for which lifetime expected credit loss are recognised but that are not credit-impaired are referred to as 'Stage 2 financial instruments'. Financial instruments allocated to Stage 2 are those that have experienced a significant increase in credit risk since initial recognition but are not credit-impaired.

Financial instruments for which lifetime expected credit loss are recognised and that are credit-impaired are referred to as 'Stage 3 financial instruments'.

The amount of expected credit losses is updated at each reporting date to reflect changes in credit risk since initial recognition of the respective financial instrument. The Bank recognises lifetime expected credit losses when there has been a significant increase in credit risk since initial recognition. However, if the credit risk on the financial instrument has not increased significantly since initial recognition, the Bank measures the loss allowance for that financial instrument at an amount equal to 12-month expected credit losses.

The Bank recognises an impairment gain or loss in profit or loss for all financial instruments with a corresponding adjustment to their carrying amount through a loss allowance account, except for investments in debt instruments that are measured at fair value through other comprehensive income, for which the loss allowance is recognised in other comprehensive income and accumulated in the fair value reserve, and does not reduce the carrying amount of the financial asset in the statement of financial position.

SOUTHERN CAPITAL SPECIALIZED BANK PLC.

(Incorporated in Cambodia)

Registration No: 00011446

NOTES TO THE FINANCIAL STATEMENTS FOR THE FINANCIAL YEAR ENDED 31 DECEMBER 2020

4. SIGNIFICANT ACCOUNTING POLICIES (CONT'D)

4.8 IMPAIRMENT (CONT'D)

(a) Impairment of Financial Assets (Cont'd)

Regulatory Provision for Loans and Advances

On 1 December 2017, the National Bank of Cambodia ("NBC") issued Prakas No. B7-017-344 on Credit Risk Grading and Impairment Provisioning which effectively repealed Prakas No. B7-09-074 on Asset Classification and Provisioning effective from the date of its issue. The Prakas requires banks and financial institutions to classify their loan portfolio into five classes. The NBC subsequently issued Circular No. B7-018-001 dated 16 February 2018 to clarify the mandatory level of general and specific allowance to be provided based on the loans and advances classification as follows:-

| Classification | Number of days past due | Regulatory Provision |
|--|-------------------------|----------------------|
| Short term loans (less than or equal one year):- | | |
| Normal/Standard | 0 to 14 days | 1% |
| Special mention | 15 days to 30 days | 3% |
| Substandard | 31 days to 60 days | 20% |
| Doubtful | 61 days to 90 days | 50% |
| Loss | From 91 days | 100% |
| Long term loans (more than one year):- | | |
| Normal/Standard | 0 to 29 days | 1% |
| Special mention | 30 days to 89 days | 3% |
| Substandard | 90 days to 179 days | 20% |
| Doubtful | 180 days to 359 days | 50% |
| Loss | From 360 days | 100% |

The regulatory provision applies to all on and off-balance sheet facilities of banks and financial institutions. Loans and advances classified as substandard, doubtful or loss are considered as non-performing loans.

The Prakas also requires the comparison of the regulatory provision with the impairment provision determined based on CIFRS. In case the regulatory provision calculated in accordance with Prakas is lower than expected credit loss determined based on CIFRS, the Bank shall recognise the expected credit loss calculated in accordance with CIFRS. In the case the regulatory provision is higher than expected credit loss, the Bank shall recognise the expected credit loss in accordance with CIFRS and transfer the difference from retained earnings into regulatory reserve. The Bank has presented the regulatory reserve in the statement of changes in equity.

An uncollectible loan or portion of a loan classified as bad is written off after taking into consideration the realizable value of the collateral, if any when in the judgment of the management, there is no prospect of recovery. Recoveries on loans previously written off are disclosed as other income in the statement of profit or loss.

SOUTHERN CAPITAL SPECIALIZED BANK PLC.

(Incorporated in Cambodia)

Registration No: 00011446

NOTES TO THE FINANCIAL STATEMENTS FOR THE FINANCIAL YEAR ENDED 31 DECEMBER 2020

4. SIGNIFICANT ACCOUNTING POLICIES (CONT'D)

4.8 IMPAIRMENT (CONT'D)

(b) Impairment of Non-financial Assets

The carrying values of assets, other than those to which IAS 36 - Impairment of Assets does not apply, are reviewed at the end of each reporting period for impairment when an annual impairment assessment is compulsory or there is an indication that the assets might be impaired. Impairment is measured by comparing the carrying values of the assets with their recoverable amounts. When the carrying amount of an asset exceeds its recoverable amount, the asset is written down to its recoverable amount and an impairment loss shall be recognised. The recoverable amount of an asset is the higher of the asset's fair value less costs to sell and its value-in-use, which is measured by reference to discounted future cash flows using a pre-tax discount rate that reflects current market assessments of the time value of money and the risks specific to the asset. Where it is not possible to estimate the recoverable amount of an individual asset, the Bank determines the recoverable amount of the cash-generating unit to which the asset belongs.

An impairment loss is recognised in profit or loss immediately.

When there is a change in the estimates used to determine the recoverable amount, a subsequent increase in the recoverable amount of an asset is treated as a reversal of the previous impairment loss and is recognised to the extent of the carrying amount of the asset that would have been determined (net of amortisation and depreciation) had no impairment loss been recognised. The reversal is recognised in profit or loss immediately.

4.9 PROVISIONS

Provisions are recognised when the Bank has a present obligation (legal or constructive) as a result of past events, when it is probable that an outflow of resources embodying economic benefits will be required to settle the obligation, and when a reliable estimate of the amount can be made. Provisions are reviewed at the end of each reporting period and adjusted to reflect the current best estimate. Where the effect of the time value of money is material, the provision is the present value of the estimated expenditure required to settle the obligation. The discount rate shall be a pre-tax rate that reflects current market assessments of the time value of money and the risks specific to the liability. The unwinding of the discount is recognised as interest expense in profit or loss.

4.10 EMPLOYEE BENEFITS

Wages, salaries, bonuses and social security contributions are recognised as an expense in the year in which the associated services are rendered by employees. Short term accumulating compensated absences such as paid annual leave are recognised when services are rendered by employees that increase their entitlement to future compensated absences. Short term non-accumulating compensated absences such as sick leave are recognised when the absences occur.

SOUTHERN CAPITAL SPECIALIZED BANK PLC.

(Incorporated in Cambodia)

Registration No: 00011446

NOTES TO THE FINANCIAL STATEMENTS FOR THE FINANCIAL YEAR ENDED 31 DECEMBER 2020

4. SIGNIFICANT ACCOUNTING POLICIES (CONT'D)

4.11 INCOME TAXES

(a) Current Tax

Current tax assets and liabilities are expected amount of income tax recoverable or payable to the taxation authorities.

Current taxes are measured using tax rates and tax laws that have been enacted or substantively enacted at the end of the reporting period and are recognised in profit or loss except to the extent that the tax relates to items recognised outside profit or loss (either in other comprehensive income or directly in equity).

(b) Deferred Tax (Cont'd)

Deferred tax is recognised using the liability method for temporary differences other than those that arise from the initial recognition of an asset or liability in a transaction which is not a business combination and at the time of the transaction, affects neither accounting profit nor taxable profit.

Deferred tax assets and liabilities are measured at the tax rates that are expected to apply in the period when the asset is realised or the liability is settled, based on the tax rates that have been enacted or substantively enacted at the end of the reporting period.

Deferred tax assets are recognised for all deductible temporary differences, unused tax losses and unused tax credits to the extent that it is probable that future taxable profits will be available against which the deductible temporary differences, unused tax losses and unused tax credits can be utilised. The carrying amounts of deferred tax assets are reviewed at the end of each reporting period and reduced to the extent that it is no longer probable that the related tax benefits will be realised.

Current and deferred tax items are recognised in correlation to the underlying transactions either in profit or loss, other comprehensive income or directly in equity. Deferred tax arising from a business combination is adjusted against goodwill or negative goodwill.

Current tax assets and liabilities or deferred tax assets and liabilities are offset when there is a legally enforceable right to set off current tax assets against current tax liabilities and when the deferred taxes relate to the same taxable entity (or on different tax entities but they intend to settle current tax assets and liabilities on a net basis) and the same taxation authority.

4.12 BORROWING COSTS

Borrowing costs that are not directly attributable to the acquisition, construction or production of a qualifying asset are recognised in profit or loss using the effective interest method.

SOUTHERN CAPITAL SPECIALIZED BANK PLC.

(Incorporated in Cambodia)

Registration No: 00011446

NOTES TO THE FINANCIAL STATEMENTS

FOR THE FINANCIAL YEAR ENDED 31 DECEMBER 2020

4. SIGNIFICANT ACCOUNTING POLICIES (CONT'D)

4.13 LEASES

The Bank assesses whether a contract is or contains a lease, at inception of the contract. The Bank recognises a right-of-use asset and corresponding lease liability with respect to all lease arrangements in which it is the lessee, except for low-value assets and short-term leases with 12 months or less. For these leases, the Bank recognises the lease payments as an operating expense on a straight-line method over the term of the lease unless another systematic basis is more representative of the time pattern in which economic benefits from the leased assets are consumed.

The Bank recognises a right-of-use asset and a lease liability at the lease commencement date. The right-of-use assets and the associated lease liabilities are presented as a separate line item in the statement of financial position.

The right-of-use asset is initially measured at cost. Cost includes the initial amount of the corresponding lease liability adjusted for any lease payments made at or before the commencement date, plus any initial direct costs incurred, less any incentives received.

The right-of-use asset is subsequently measured at cost less accumulated depreciation and any impairment losses, and adjustment for any remeasurement of the lease liability. The depreciation starts from the commencement date of the lease. If the lease transfers ownership of the underlying asset to the Bank or the cost of the right-of-use asset reflects that the Bank expects to exercise a purchase option, the related right-of-use asset is depreciated over the useful life of the underlying asset. Otherwise, the Bank depreciates the right-of-use asset to the earlier of the end of the useful life of the right-of-use asset or the end of the lease term. The estimated useful lives of the right-of-use assets are determined on the same basis as those plant and equipment.

The lease liability is initially measured at the present value of the lease payments that are not paid at the commencement date, discounted by using the rate implicit in the lease. If this rate cannot be readily determined, the Bank uses its incremental borrowing rate.

The lease liability is subsequently measured at amortised cost using the effective interest method. It is remeasured when there is a change in the future lease payments (other than lease modification that is not accounted for as a separate lease) with the corresponding adjustment is made to the carrying amount of the right-of-use asset, or is recognised in profit or loss if the carrying amount has been reduced to zero.

4.14 OTHER CREDIT RELATED COMMITMENTS

In the normal course of business, the Bank enter into other credit related commitments including loan commitments, letters of credit and guarantees. The accounting policy and regulatory provision followed the National Bank of Cambodia's Prakas No. B7-017-344 and Circular No. B7-018-001 Sor Ror Chor Nor in Note 4.8(a) above.

SOUTHERN CAPITAL SPECIALIZED BANK PLC.

(Incorporated in Cambodia)

Registration No: 00011446

NOTES TO THE FINANCIAL STATEMENTS FOR THE FINANCIAL YEAR ENDED 31 DECEMBER 2020

4. SIGNIFICANT ACCOUNTING POLICIES (CONT'D)

4.15 FAIR VALUE MEASUREMENTS

Fair value is the price that would be received to sell an asset or paid to transfer a liability in an orderly transaction between market participants at the measurement date, regardless of whether that price is directly observable or estimated using a valuation technique. The measurement assumes that the transaction takes place either in the principal market or in the absence of a principal market, in the most advantageous market. For non-financial asset, the fair value measurement takes into account a market participant's ability to generate economic benefits by using the asset in its highest and best use or by selling it to another market participant that would use the asset in its highest and best use.

For financial reporting purposes, the fair value measurements are analysed into level 1 to level 3 as follows:-

Level 1: Inputs are quoted prices (unadjusted) in active markets for identical assets or liability that the entity can access at the measurement date;

Level 2: Inputs are inputs, other than quoted prices included within level 1, that are observable for the asset or liability, either directly or indirectly; and

Level 3: Inputs are unobservable inputs for the asset or liability.

The transfer of fair value between levels is determined as of the date of the event or change in circumstances that caused the transfer.

SOUTHERN CAPITAL SPECIALIZED BANK PLC.

(Incorporated in Cambodia)

Registration No: 00011446

NOTES TO THE FINANCIAL STATEMENTS FOR THE FINANCIAL YEAR ENDED 31 DECEMBER 2020

4. SIGNIFICANT ACCOUNTING POLICIES (CONT'D)

4.16 REVENUE FROM CONTRACTS WITH CUSTOMERS

Revenue from contracts with customers is measured based on the consideration specified in a contract with a customer in exchange for transferring services to a customer net of sales and service tax, returns, rebates and discounts. The Bank recognises revenue when (or as) it transfers control over a service to customer. Depending on the substance of the contract, revenue is recognised when the performance obligation is satisfied, which may be at a point in time or over time.

(a) Interest Income

Interest income is recognised on an accrual basis, based on the effective interest method. Interest income on performing loans and advances, and deposits and placements with banks are recognised on a daily accrual basis. Interest on non-performing loans is recorded as interest in suspense rather than income until it is realised on cash basis.

For information on when customer's loan accounts are classified as non-performing, see Note 4.8(a).

The policy on the suspension of interest is in conformity with the National Bank of Cambodia's guidelines on the suspension of interest on non-performing loans and provision for loan losses.

(b) Fee and commission income

Loan arrangement fee and commissions are recognised in the statement of income when all the conditions precedent are fulfilled.

Service charges, processing fees and other operating income are recognised when the right to receive payment is established.

SOUTHERN CAPITAL SPECIALIZED BANK PLC.

(Incorporated in Cambodia)

Registration No: 00011446

NOTES TO THE FINANCIAL STATEMENTS FOR THE FINANCIAL YEAR ENDED 31 DECEMBER 2020

5. CASH ON HAND

| | 31.12.2020 USD | 31.12.2019 USD | 31.12.2020 KHR'000 | 31.12.2019 KHR'000 |
|-------------|-------------------|-------------------|-----------------------|-----------------------|
| Khmer Riels | - | - | - | - |
| US Dollars | 1,315 | 7,752 | 5,319 | 31,589 |
| | 1,315 | 7,752 | 5,319 | 31,589 |

6. DEPOSITS AND PLACEMENTS WITH BANKS AND OTHER FINANCIAL INSTITUTIONS

| | 31.12.2020 USD | 31.12.2019 USD | 31.12.2020 KHR'000 | 31.12.2019 KHR'000 |
|------------------------------|-------------------|-------------------|-----------------------|-----------------------|
| In Cambodia:- | | | | |
| Saving deposits | 2,189,105 | 4,506,893 | 8,854,930 | 18,365,589 |
| Term deposits | 1,332,302 | 300,000 | 5,389,161 | 1,222,500 |
| | 3,521,407 | 4,806,893 | 14,244,091 | 19,588,089 |
| Less: Loss allowance for ECL | (3,450) | (47,902) | (13,955) | (195,201) |
| | 3,517,957 | 4,758,991 | 14,230,136 | 19,392,888 |

The movements in the loss allowance for ECL expected credit losses are as follows:-

| | 12-month ECL (Stage 1) USD | Total USD | 12-month ECL (Stage 1) KHR'000 | Total KHR'000 |
|------------------------------------|----------------------------------|--------------|--------------------------------------|------------------|
| In Cambodia:- | | | | |
| At 1 January 2019 | (50,124) | (50,124) | (201,394) | (201,394) |
| Net remeasurement of allowances | 2,222 | 2,222 | 9,004 | 9,004 |
| Translation difference | - | - | (7,630) | (7,630) |
| At 31 December 2019/1 January 2020 | (47,902) | (47,902) | (201,394) | (201,394) |
| Net remeasurement of allowances | 44,452 | 44,452 | 179,808 | 179,808 |
| Translation difference | - | - | 1,438 | 1,438 |
| At 31 December 2020 | (3,450) | (3,450) | (13,955) | (13,955) |

The savings and term deposits are with financial institutions.

SOUTHERN CAPITAL SPECIALIZED BANK PLC.

(Incorporated in Cambodia)

Registration No: 00011446

NOTES TO THE FINANCIAL STATEMENTS FOR THE FINANCIAL YEAR ENDED 31 DECEMBER 2020

6. DEPOSITS AND PLACEMENTS WITH BANKS AND OTHER FINANCIAL INSTITUTIONS (CONT'D)

The above amounts are analysed as follows:-

| | 31.12.2020 USD | 31.12.2019 USD | 31.12.2020 KHR'000 | 31.12.2019 KHR'000 |
|-----------------------------------|-------------------|-------------------|-----------------------|-----------------------|
| a) By maturity:- | | | | |
| Within 1 month | 2,189,105 | 4,506,893 | 8,854,930 | 18,365,589 |
| 6 to 12 months | 1,332,302 | 300,000 | 5,389,162 | 1,222,500 |
| | 3,521,407 | 4,806,893 | 14,244,092 | 19,588,089 |
| b) By currency:- | | | | |
| Khmer Riels | 18,876 | 30,986 | 76,354 | 126,264 |
| US Dollars | 3,502,531 | 4,775,907 | 14,167,738 | 19,461,825 |
| | 3,521,407 | 4,806,893 | 14,244,092 | 19,588,089 |
| c) By interest rate (per annum):- | | | | |
| Saving accounts | 0.5% - 1% | 0.5% - 1% | 0.5% - 1% | 0.5% - 1% |
| Term deposits | 5.5% | 5.5% | 5.5% | 5.5% |

7. LOANS AND ADVANCES

| | 31.12.2020 USD | 31.12.2019 USD | 31.12.2020 KHR'000 | 31.12.2019 KHR'000 |
|--|-------------------|-------------------|-----------------------|-----------------------|
| Short term | 1,261,582 | 1,461,803 | 5,103,098 | 5,956,848 |
| Long term | 10,648,452 | 8,947,335 | 43,072,988 | 36,460,390 |
| Gross loans and advances at amortised cost | 11,910,034 | 10,409,138 | 48,176,086 | 42,417,238 |
| Less: Loss allowance for ECL | (669,722) | (1,041,722) | (2,709,024) | (4,224,166) |
| Translation differences | - | - | - | (20,840) |
| Net loans and advances at amortised cost | 11,240,312 | 9,367,416 | 45,467,062 | 38,172,232 |
| Unearned interest revenue | - | (215,095) | - | (876,524) |
| | 11,240,312 | 9,152,321 | 45,467,062 | 37,295,708 |

SOUTHERN CAPITAL SPECIALIZED BANK PLC.

(Incorporated in Cambodia)

Registration No: 00011446

NOTES TO THE FINANCIAL STATEMENTS FOR THE FINANCIAL YEAR ENDED 31 DECEMBER 2020

7. LOANS AND ADVANCES (CONT'D)

The movements in the loss allowance for ECL are as follows:-

| | 12-month ECL (Stage 1) USD | Lifetime ECL - not credit impaired (Stage 2) USD | Lifetime ECL - credit impaired (Stage 3) USD | Total USD |
|--|----------------------------------|--|--|--------------|
| At 1 January 2019 | 251,023 | 12 | 588,981 | 840,016 |
| Changes in expected credit losses due to transferred within stages:- | | | | |
| Transferred to Stage 3 | (270) | - | 270 | - |
| Net remeasurement of allowances | (86,317) | (12) | 46,353 | (39,976) |
| New financial assets originated or purchased | 203,540 | - | 38,142 | 241,682 |
| At 31 December 2019/1 January 2020 | 367,976 | - | 673,746 | 1,041,722 |
| Changes in expected credit losses due to transferred within stages:- | | | | |
| Transferred to Stage 3 | - | - | - | - |
| Net remeasurement of allowances | (370,975) | - | (440,860) | (811,835) |
| New financial assets originated or purchased | 302,932 | - | 136,903 | 439,835 |
| At 31 December 2020 | 299,933 | - | 369,789 | 669,722 |

| | 12-month ECL (Stage 1) KHR | Lifetime ECL - not credit impaired (Stage 2) KHR | Lifetime ECL - credit impaired (Stage 3) KHR | Translation reserve KHR | Total KHR |
|--|-------------------------------------|--|--|-------------------------------|--------------|
| At 1 January 2019 | 1,008,610 | 48 | 2,366,526 | - | 3,375,184 |
| Changes in expected credit losses due to transferred within stages:- | | | | | |
| Transferred to Stage 3 | (1,100) | - | 1,100 | - | - |
| CNet remeasurement of allowances | (351,742) | (48) | 188,888 | - | (162,902) |
| New financial assets originated or purchased | 829,426 | - | 155,429 | - | 984,855 |
| Translation difference | - | - | - | 29,029 | 23,908 |
| At 31 December 2019/1 January 2020 | 1,485,194 | - | 2,711,943 | 29,029 | 4,226,166 |
| Changes in expected credit losses due to transferred within stages:- | | | | | |
| Transferred to Stage 3 | - | - | - | - | - |
| Net remeasurement of allowances | (1,500,594) | - | (1,783,279) | - | (3,283,873) |
| New financial assets originated or purchased | 1,225,360 | - | 553,773 | - | 1,779,133 |
| Translation difference | - | - | - | (12,402) | (12,402) |
| At 31 December 2020 | 1,209,960 | - | 1,482,437 | 16,627 | 2,709,024 |

SOUTHERN CAPITAL SPECIALIZED BANK PLC.

(Incorporated in Cambodia)

Registration No: 00011446

NOTES TO THE FINANCIAL STATEMENTS FOR THE FINANCIAL YEAR ENDED 31 DECEMBER 2020

7. LOANS AND ADVANCES (CONT'D)

The loans and advances are analysed as follows:-

| | 31.12.2020 USD | 31.12.2019 USD | 31.12.2020 KHR'000 | 31.12.2019 KHR'000 |
|----------------------------|-------------------|-------------------|-----------------------|-----------------------|
| a) By maturity:- | | | | |
| 1 to 3 months | 715,000 | 496,255 | 2,892,175 | 2,022,239 |
| 4 to 6 months | 2,043,249 | 666,920 | 8,264,941 | 2,717,699 |
| 7 to 12 months | 1,468,291 | 298,628 | 5,939,237 | 1,216,909 |
| 1 to 5 years | 5,750,357 | 6,472,048 | 23,260,194 | 26,373,596 |
| Over 5 years | 1,933,137 | 2,475,287 | 7,819,539 | 10,086,795 |
| | 11,910,034 | 10,409,138 | 48,176,086 | 42,417,238 |
| b) By industry:- | | | | |
| Retail trade | 2,809,578 | 2,297,771 | 11,364,743 | 9,363,419 |
| Construction | 2,469,921 | 2,882,785 | 9,990,830 | 11,747,349 |
| Hotel and restaurants | 1,864,229 | 776,713 | 7,540,805 | 3,165,104 |
| Manufacturing and printing | 2,320,742 | 2,353,035 | 9,387,402 | 9,588,619 |
| Personal | 829,641 | 694,897 | 3,355,897 | 2,831,704 |
| Whole sale | 410,000 | 210,503 | 1,658,450 | 857,798 |
| Real estate activities | 930,106 | 660,992 | 3,762,279 | 2,693,543 |
| Others | 275,817 | 532,442 | 1,115,680 | 2,169,702 |
| | 11,910,034 | 10,409,138 | 48,176,086 | 42,417,238 |
| c) By Currency:- | | | | |
| Khmer Riels | 836,005 | 612,175 | 3,381,640 | 2,494,613 |
| US Dollars | 11,074,029 | 9,796,963 | 44,794,446 | 39,922,625 |
| | 11,910,034 | 10,409,138 | 48,176,086 | 42,417,238 |
| d) By residency status:- | | | | |
| Residents | 11,910,034 | 10,114,591 | 48,176,086 | 41,216,958 |
| Non-residents | - | 294,547 | - | 1,200,280 |
| | 11,910,034 | 10,409,138 | 48,176,086 | 42,417,238 |
| e) By relationship:- | | | | |
| External customers | 11,910,034 | 10,098,216 | 48,176,086 | 41,150,230 |
| Staff loans | - | 310,922 | - | 1,267,008 |
| | 11,910,034 | 10,409,138 | 48,176,086 | 42,417,238 |

SOUTHERN CAPITAL SPECIALIZED BANK PLC.

(Incorporated in Cambodia)

Registration No: 00011446

NOTES TO THE FINANCIAL STATEMENTS FOR THE FINANCIAL YEAR ENDED 31 DECEMBER 2020

7. LOANS AND ADVANCES (CONT'D)

The loans and advances are analysed as follows:-

f) By performance and security:-

Standard loans

| | | | | |
|-----------------|-----------|-----------|------------|------------|
| Secured | 9,076,858 | 9,071,435 | 36,715,891 | 36,966,098 |
| Unsecured | 2,120,832 | 343,936 | 8,578,765 | 1,401,539 |
| Special mention | | | | |
| Secured | - | 185,898 | | 757,534 |
| Unsecured | 295,817 | - | 1,196,580 | - |
| Substandard | | | | |
| Secured | 49,999 | - | 202,246 | - |
| Doubtful | | | | |
| Secured | 29,270 | 335,208 | 118,395 | 1,365,973 |
| Loss | | | | |
| Secured | 288,000 | 472,661 | 1,164,960 | 1,926,094 |
| Unsecured | 49,258 | - | 199,249 | - |

| | | | |
|------------|------------|------------|------------|
| 11,910,034 | 10,409,138 | 48,176,086 | 42,417,238 |
|------------|------------|------------|------------|

g) By exposure:-

Non-large

| | | | |
|------------|------------|------------|------------|
| 11,910,034 | 10,409,138 | 48,176,086 | 42,417,238 |
|------------|------------|------------|------------|

h) By interest rate (per annum):-

Term loans

8.00% - 11.00%

8.00% - 11.00%

Consumer loans:-

Loan to third party

6.00% - 11.00%

8.00% - 11.00%

Staff loans

None

None

8. OTHER ASSETS

| | 31.12.2020 USD | 31.12.2019 USD | 31.12.2020 KHR'000 | 31.12.2019 KHR'000 |
|--|-------------------|-------------------|-----------------------|-----------------------|
| Interest receivable from deposits and placements with financial institutions | 40,281 | 15,144 | 162,937 | 61,712 |
| Interest receivable from loans and advances | 122,486 | 124,488 | 495,456 | 507,289 |
| Prepayments and deposits | 27 | 37,042 | 109 | 150,946 |
| | 162,794 | 176,674 | 658,502 | 719,947 |

9. STATUTORY DEPOSITS WITH NBC

| | 31.12.2020 USD | 31.12.2019 USD | 31.12.2020 KHR'000 | 31.12.2019 KHR'000 |
|---------------------------|-------------------|-------------------|-----------------------|-----------------------|
| Capital guarantee deposit | 750,000 | 750,000 | 3,033,750 | 3,056,250 |

Capital guarantee deposit

Under NBC Prakas No. B7-01-136 dated 15 October 2001, banks are required to maintain a capital guarantee of 5.0% of registered capital with the NBC. This deposit is not available for use in the Bank's day-to-day operations but is refundable when the Bank voluntarily ceases to operate the business in Cambodia.

SOUTHERN CAPITAL SPECIALIZED BANK PLC.

(Incorporated in Cambodia)

Registration No: 00011446

**NOTES TO THE FINANCIAL STATEMENTS
FOR THE FINANCIAL YEAR ENDED 31 DECEMBER 2020****10. RIGHT-OF-USE ASSETS**

| | Building USD | Total USD | Building KHR'000 | Total KHR'000 |
|---------------------------------|-------------------------|----------------------|-----------------------------|--------------------------|
| 2020 | | | | |
| <i>Cost</i> | | | | |
| At 1.1.2020 | 52,890 | 52,890 | 213,517 | 213,517 |
| Translation difference | - | - | 423 | 423 |
| At 31.12.2020 | 52,890 | 52,890 | 213,940 | 213,940 |
| <i>Accumulated depreciation</i> | | | | |
| At 1.1.2020 | 30,960 | 30,960 | 124,152 | 124,152 |
| Additions | 15,480 | 15,480 | 62,617 | 62,617 |
| Translation difference | - | - | 1,081 | 1,081 |
| At 31.12.2020 | 46,440 | 46,440 | 187,850 | 187,850 |
| <i>Net carrying amount</i> | | | | |
| At 31.12.2020 | 6,450 | 6,450 | 26,090 | 26,090 |
| 2019 | | | | |
| <i>Cost</i> | | | | |
| At 1.1.2019 | | | | |
| Additions | 52,890 | 52,890 | 213,517 | 213,517 |
| Translation difference | - | - | - | - |
| At 31.12.2019 | 52,890 | 52,890 | 213,517 | 213,517 |
| <i>Accumulated depreciation</i> | | | | |
| At 1.1.2019 | 15,480 | 15,480 | 63,204 | 63,204 |
| Additions | 15,480 | 15,480 | 64,763 | 64,763 |
| Translation difference | - | - | (3,815) | (3,815) |
| At 31.12.2019 | 30,960 | 30,960 | 124,152 | 124,152 |
| <i>Net carrying amount</i> | | | | |
| At 31.12.2019 | 21,930 | 21,930 | 89,365 | 89,365 |

SOUTHERN CAPITAL SPECIALIZED BANK PLC.

(Incorporated in Cambodia)

Registration No: 00011446

**NOTES TO THE FINANCIAL STATEMENTS
FOR THE FINANCIAL YEAR ENDED 31 DECEMBER 2020****11. EQUIPMENT**

| | Leasehold Improvement USD | Furniture and Fixtures USD | Computer Equipment USD | Equipment and Others USD | Motor Vehicles USD | Computer Software USD | Total USD |
|---------------------------------|---------------------------------|----------------------------------|------------------------------|-----------------------------------|--------------------------|-----------------------------|--------------|
| 2020 | | | | | | | |
| <i>Cost</i> | | | | | | | |
| At 1.1.2020 | 17,497 | 2,802 | 5,639 | 10,633 | 17,497 | 2,802 | 223,321 |
| Additions | - | - | - | 382 | - | - | 382 |
| Disposal | - | - | - | - | - | - | - |
| At 31.12.2020 | 17,497 | 2,802 | 5,639 | 11,015 | 17,497 | 2,802 | 223,703 |
| <i>Accumulated depreciation</i> | | | | | | | |
| At 1.1.2020 | 10,330 | 1,916 | 4,632 | 6,721 | 99,742 | 7,563 | 130,904 |
| Additions | 1,433 | 222 | 503 | 934 | 14,189 | 7,563 | 24,844 |
| Disposal | - | - | - | - | - | - | - |
| At 31.12.2020 | 11,763 | 2,138 | 5,135 | 7,655 | 113,93 | 15,126 | 155,748 |
| <i>Net carrying amount</i> | | | | | | | |
| At 31.12.2020 | 5,734 | 664 | 504 | 3,360 | 42,569 | 15,124 | 67,955 |
| 2019 | | | | | | | |
| <i>Cost</i> | | | | | | | |
| At 1.1.2019 | 17,497 | 2,802 | 5,639 | 10,633 | 151,800 | - | 188,371 |
| Additions | - | - | - | - | 16,700 | 30,250 | 46,950 |
| Disposal | - | - | - | - | (12,000) | - | (12,000) |
| At 31.12.2019 | 17,497 | 2,802 | 5,639 | 10,633 | 156,500 | 30,250 | 223,321 |
| <i>Accumulated depreciation</i> | | | | | | | |
| At 1.1.2019 | 8,539 | 1,620 | 3,624 | 5,618 | 87,760 | - | 107,161 |
| Additions | 1,791 | 296 | 1,008 | 1,103 | 18,919 | 7,563 | 30,680 |
| Disposal | - | - | - | - | (6,937) | - | (6,937) |
| At 31.12.2019 | 10,330 | 1,916 | 4,632 | 6,721 | 99,742 | 7,563 | 130,904 |
| <i>Net carrying amount</i> | | | | | | | |
| At 31.12.2019 | 7,167 | 886 | 1,007 | 3,912 | 56,758 | 22,687 | 92,417 |

SOUTHERN CAPITAL SPECIALIZED BANK PLC.

(Incorporated in Cambodia)

Registration No: 00011446

**NOTES TO THE FINANCIAL STATEMENTS
FOR THE FINANCIAL YEAR ENDED 31 DECEMBER 2020****11. EQUIPMENT (CONT'D)**

| | Leasehold Improvement KHR'000 | Furniture and Fixtures KHR'000 | Computer Equipment KHR'000 | Equipment and Others KHR'000 | Motor Vehicles KHR'000 | Computer Software KHR'000 | Total KHR'000 |
|-------------------------------------|-------------------------------------|--------------------------------------|----------------------------------|---------------------------------------|------------------------------|---------------------------------|------------------|
| 2020 | | | | | | | |
| <i>Cost</i> | | | | | | | |
| At 1.1.2020 | 71,300 | 11,418 | 22,979 | 43,329 | 637,738 | 123,269 | 910,033 |
| Additions | - | - | - | 1,545 | - | - | 1,545 |
| Disposal | - | - | - | - | - | - | - |
| Translation difference | (525) | (84) | (169) | (318) | (4,695) | (908) | (5,154) |
| At 31.12.2020 | 70,775 | 11,334 | 22,810 | 44,556 | 633,043 | 122,361 | 904,879 |
| <i>Accumulated depreciation</i> | | | | | | | |
| At 1.1.2020 | 42,095 | 7,808 | 18,875 | 27,388 | 406,449 | 30,819 | 533,434 |
| Additions | 5,796 | 898 | 2,035 | 3,778 | 57,395 | 30,592 | 100,494 |
| Disposal | - | - | - | - | - | - | - |
| Translation difference | (310) | (58) | (139) | (202) | (2,993) | (225) | (3,927) |
| At 31.12.2020 | 47,581 | 8,648 | 20,771 | 30,964 | 460,851 | 61,186 | 630,001 |
| <i>Net carrying amount</i> | | | | | | | |
| At 31.12.2020 | 23,194 | 2,686 | 2,039 | 13,592 | 172,192 | 61,175 | 274,878 |
| 2019 | | | | | | | |
| <i>Cost</i> | | | | | | | |
| At 1.1.2019 | 70,303 | 11,258 | 22,658 | 42,723 | 609,932 | - | 756,874 |
| Additions | - | - | - | - | 68,053 | 123,269 | 191,322 |
| Disposal | - | - | - | - | (48,900) | - | (48,900) |
| Translation difference | 997 | 160 | 321 | 606 | 8,653 | - | 10,737 |
| At 31.12.2019 | 71,300 | 11,418 | 22,979 | 43,329 | 637,738 | 123,269 | 910,033 |
| <i>Accumulated depreciation</i> | | | | | | | |
| At 1.1.2019 | 34,310 | 6,509 | 14,561 | 22,573 | 352,619 | - | 430,572 |
| Additions | 7,257 | 1,199 | 4,084 | 4,469 | 74,623 | 30,645 | 122,277 |
| Disposal | - | - | - | - | (28,272) | - | (28,272) |
| Translation difference | 528 | 100 | 230 | 346 | 7,479 | 174 | 8,857 |
| At 31.12.2019 | 42,095 | 7,808 | 18,875 | 27,388 | 406,449 | 30,819 | 533,434 |
| <i>Net carrying amount</i> | | | | | | | |
| At 31.12.2019 | 29,205 | 3,610 | 4,104 | 15,941 | 231,289 | 92,450 | 376,599 |

SOUTHERN CAPITAL SPECIALIZED BANK PLC.

(Incorporated in Cambodia)

Registration No: 00011446

**NOTES TO THE FINANCIAL STATEMENTS
FOR THE FINANCIAL YEAR ENDED 31 DECEMBER 2020****12. OTHER LIABILITIES**

| | 31.12.2020 USD | 31.12.2019 USD | 31.12.2020 KHR'000 | 31.12.2019 KHR'000 |
|------------------|--------------------------|--------------------------|------------------------------|------------------------------|
| Accrual expenses | 26,852 | 25,162 | 108,616 | 102,535 |
| Others | 16,352 | 13,173 | 66,144 | 53,680 |
| | <u>43,204</u> | <u>38,335</u> | <u>174,760</u> | <u>156,215</u> |

13. SHARE CAPITAL

| | 31.12.2020 USD | 31.12.2019 USD | 31.12.2020 KHR'000 | 31.12.2019 KHR'000 |
|---|--------------------------|--------------------------|------------------------------|------------------------------|
| Issued and Fully Paid-Up | | | | |
| Shares of \$1 each:- 15,000,000 Shares | 15,000,000 | 15,000,000 | 60,000,000 | 60,000,000 |

14. RETAINED PROFITS

The retained profits are wholly distributable by way of dividends. With effect from 1 January 2012, the distribution of dividends to foreign shareholder is subject to withholding tax at the rate of 14%.

15. INTEREST INCOME

Interest income was made from the following sources:-

| | 2020 USD | 2019 USD | 2020 KHR'000 | 2019 KHR'000 |
|---|--------------------|--------------------|------------------------|------------------------|
| Loans and advances | 995,901 | 868,307 | 4,028,420 | 3,518,372 |
| Deposits and placements with banks and other financial institutions | 111,948 | 86,089 | 452,829 | 348,841 |
| | <u>1,107,849</u> | <u>954,396</u> | <u>4,481,249</u> | <u>3,867,213</u> |

SOUTHERN CAPITAL SPECIALIZED BANK PLC.

(Incorporated in Cambodia)

Registration No: 00011446

**NOTES TO THE FINANCIAL STATEMENTS
FOR THE FINANCIAL YEAR ENDED 31 DECEMBER 2020****16. PERSONNEL COSTS**

| | 2020 USD | 2019 USD | 2020 KHR'000 | 2019 KHR'000 |
|--------------------------------|--------------------|--------------------|------------------------|------------------------|
| Salaries, allowances and bonus | 460,328 | 414,594 | 1,862,027 | 1,679,935 |
| Others | 3,078 | 2,320 | 12,450 | 9,401 |
| | <u>463,406</u> | <u>416,914</u> | <u>1,874,477</u> | <u>1,689,336</u> |

17. DEPRECIATION AND AMORTISATION

| | 2020 USD | 2019 USD | 2020 KHR'000 | 2019 KHR'000 |
|-------------------------------------|--------------------|--------------------|------------------------|------------------------|
| Depreciation of equipment | 24,844 | 30,680 | 100,494 | 122,277 |
| Depreciation on rights of use asset | 15,480 | 15,480 | 62,617 | 64,763 |
| | <u>40,324</u> | <u>46,160</u> | <u>163,111</u> | <u>187,040</u> |

18. ADMINISTRATION AND GENERAL EXPENSES

| | 2020 USD | 2019 USD | 2020 KHR'000 | 2019 KHR'000 |
|-----------------------------|--------------------|--------------------|------------------------|------------------------|
| Legal and professional fees | 10,450 | 10,450 | 42,270 | 42,343 |
| License and membership fees | 17,220 | 17,422 | 69,655 | 70,594 |
| Others | 247,966 | 188,468 | 1,003,023 | 763,673 |
| | <u>275,636</u> | <u>216,340</u> | <u>1,114,948</u> | <u>876,610</u> |

19. LOSS ALLOWANCE FOR ECL ON LOANS AND ADVANCES

| | 2020 USD | 2019 USD | 2020 KHR'000 | 2019 KHR'000 |
|--|--------------------|--------------------|------------------------|------------------------|
| Expected credit losses on loans and advances at amortised cost | (372,000) | 201,706 | (1,504,740) | 817,313 |

SOUTHERN CAPITAL SPECIALIZED BANK PLC.

(Incorporated in Cambodia)

Registration No: 00011446

**NOTES TO THE FINANCIAL STATEMENTS
FOR THE FINANCIAL YEAR ENDED 31 DECEMBER 2020****20. LOSS ALLOWANCE FOR ECL ON OTHERS**

| | 2020 USD | 2019 USD | 2020 KHR'000 | 2019 KHR'000 |
|---|-------------|-------------|-----------------|-----------------|
| Expected credit losses made on:- | | | | |
| Deposits and placements with banks and other financial institutions | (44,452) | (2,222) | (179,808) | (9,004) |

21. INCOME TAX

a) Deferred tax

Deferred tax assets attributable from:-

| | At 1.1.2020 USD | Recognised in Profit or Loss USD | At 31.12.2020 USD |
|------------------------|--------------------|---|-------------------------|
| 2020 | | | |
| Loss allowance for ECL | 86,335 | (24,000) | 62,335 |
| | At 1.1.2019 USD | Recognised in Profit or Loss USD | At 31.12.2019 USD |
| 2019 | | | |
| Loss allowance for ECL | 115,424 | (29,089) | 86,335 |

SOUTHERN CAPITAL SPECIALIZED BANK PLC.

(Incorporated in Cambodia)

Registration No: 00011446

**NOTES TO THE FINANCIAL STATEMENTS
FOR THE FINANCIAL YEAR ENDED 31 DECEMBER 2020****21. INCOME TAX**

a) Deferred tax (cont'd)

Deferred tax assets attributable from:-

| | At 1.1.2020 KHR'000 | Recognised in Profit or Loss KHR'000 | At 31.12.2020 KHR'000 |
|------------------------|-------------------------------|--|---|
| 2020 | | | |
| Loss allowance for ECL | 351,815 | (97,080) | 252,145 |
| | <u>351,815</u> | <u>(97,080)</u> | <u>252,145</u> |
| | At 1.1.2019 KHR'000 | Recognised in Profit or Loss KHR'000 | At 31.12.2019 KHR'000 |
| 2019 | | | |
| Loss allowance for ECL | 463,774 | (111,959) | 351,815 |
| | <u>463,774</u> | <u>(111,959)</u> | <u>351,815</u> |

b) Income tax payable

| | 2020 USD | 2019 USD | 2020 KHR'000 | 2019 KHR'000 |
|---------------------------------|--------------------|--------------------|------------------------|------------------------|
| At 1 January | 12,163 | 11,704 | 49,564 | 47,027 |
| Current income tax expense | 147,752 | 12,164 | 597,653 | 49,284 |
| Income tax paid during the year | (22,752) | (11,705) | (92,032) | (47,429) |
| Translation difference | | - | (361) | 682 |
| At 31 December | <u>137,163</u> | <u>12,163</u> | <u>554,824</u> | <u>49,564</u> |

SOUTHERN CAPITAL SPECIALIZED BANK PLC.

(Incorporated in Cambodia)

Registration No: 00011446

**NOTES TO THE FINANCIAL STATEMENTS
FOR THE FINANCIAL YEAR ENDED 31 DECEMBER 2020****21. INCOME TAX (CONT'D)**

c) Income tax expense

| | 2020 USD | 2019 USD | 2020 KHR'000 | 2019 KHR'000 |
|---|--------------------|--------------------|------------------------|------------------------|
| Current tax: | | | | |
| - for the financial year | 147,752 | 12,164 | 597,653 | 49,284 |
| Deferred tax liability (Note 21(a)): | | | | |
| - for the current financial year | 24,000 | 29,089 | 97,080 | 117,869 |
| | <u>171,752</u> | <u>41,253</u> | <u>694,733</u> | <u>167,153</u> |

In accordance with Cambodian Law on Taxation, the Bank has an obligation to pay corporate income tax of either the profit tax at the rate of 20% of taxable profits or the minimum tax at 1% of gross revenue, whichever is higher.

A reconciliation of income tax expense applicable to the profit before tax at the corporate tax rate to income tax expense at the effective tax of the Bank is as follows:-

| | 2020 USD | 2019 USD | 2020 KHR'000 | 2019 KHR'000 |
|---|--------------------|--------------------|------------------------|------------------------|
| Profit before tax | <u>819,929</u> | <u>106,126</u> | <u>3,316,612</u> | <u>430,023</u> |
| Tax at the corporate tax rate of 20% | 163,986 | 21,225 | 663,320 | 86,004 |
| Others | 7,766 | 20,028 | 31,413 | 81,149 |
| | <u>171,752</u> | <u>41,253</u> | <u>694,733</u> | <u>167,153</u> |

SOUTHERN CAPITAL SPECIALIZED BANK PLC.

(Incorporated in Cambodia)

Registration No: 00011446

NOTES TO THE FINANCIAL STATEMENTS FOR THE FINANCIAL YEAR ENDED 31 DECEMBER 2020

22. TAX CONTINGENCIES

The taxation system in Cambodia is relatively new and is characterised by numerous taxes and frequently changing legislation, which is often unclear and subject to interpretation. Often different interpretation exists among numerous taxation authorities and jurisdictions. Taxes are subject to review and investigation by a number of authorities who are enabled by law to impose severe fines, penalties and interest charges.

These facts may create tax risks in Cambodia, substantially more compared to other countries. Management believes that tax liabilities have been adequately provided based on its interpretation of tax legislations. However, the relevant authorities may have differing interpretations and effects could be significant since the interpretation of the Bank.

23. CASH FLOW INFORMATION

(a) The reconciliation of lease liabilities is as follows:-

| | 2020 USD | 2019 USD | 2020 KHR'000 | 2019 KHR'000 |
|---|-------------|-------------|-----------------|-----------------|
| At 1 January | 15,348 | 29,520 | 62,543 | 118,611 |
| <u>Changes in Financing Cash Flows</u> | | | | |
| Repayment of principal | (17,148) | (14,172) | (69,364) | (57,425) |
| Repayment of interest | - | (1,800) | - | (7,293) |
| Repayment of lease liabilities | (17,148) | (15,972) | (69,364) | (64,718) |
| <u>Non-cash Changes</u> | | | | |
| Interest expense recognised in profit or loss | 1,800 | 1,800 | 7,281 | 7,293 |
| Translation difference | - | - | (460) | 1,357 |
| At 31 December | - | 15,348 | - | 62,543 |

SOUTHERN CAPITAL SPECIALIZED BANK PLC.

(Incorporated in Cambodia)

Registration No: 00011446

NOTES TO THE FINANCIAL STATEMENTS FOR THE FINANCIAL YEAR ENDED 31 DECEMBER 2020

23. CASH FLOW INFORMATION (CONT'D)

(b) The cash and cash equivalents comprise the following:-

| | 2020 USD | 2019 USD | 2020 KHR'000 | 2019 KHR'000 |
|--|------------------|------------------|-------------------|-------------------|
| Cash on hand | 1,315 | 7,752 | 5,319 | 31,589 |
| Deposits and placements with banks and other financial institutions | 3,521,407 | 4,806,893 | 14,244,091 | 19,588,089 |
| | <u>3,522,722</u> | <u>4,814,645</u> | <u>14,249,410</u> | <u>19,619,678</u> |
| Less: Deposits with tenure of more than 3 months | 1,332,302 | 300,000 | 5,389,162 | 1,222,500 |
| | <u>2,190,420</u> | <u>4,514,645</u> | <u>8,860,248</u> | <u>18,397,178</u> |

24. RELATED PARTY DISCLOSURES

a) Identities of Related Parties

Parties are considered to be related to the Bank if the Bank has the ability, directly or indirectly, to control or jointly control the party or exercise significant influence over the party in making financial and operating decisions, or vice versa, or where the Bank and the party are subject to common control.

In addition to the information detailed elsewhere in the financial statements, the Bank has related party relationships with its directors, key management personnel and entities within the same group of companies.

b) Significant Related Party Transactions

Other than those disclosed elsewhere in the financial statements, the Bank carried out the following significant transactions with the related parties during the financial year:-

| | 2020 USD | 2019 USD | 2020 KHR'000 | 2019 KHR'000 |
|---|-------------|-------------|-----------------|-----------------|
| Key management personnel compensation:- | | | | |
| Short term employee benefits | 292,400 | 292,400 | 1,182,758 | 1,184,805 |
| Management fee | 120,000 | 120,000 | 485,400 | 486,240 |

SOUTHERN CAPITAL SPECIALIZED BANK PLC.

(Incorporated in Cambodia)

Registration No: 00011446

NOTES TO THE FINANCIAL STATEMENTS FOR THE FINANCIAL YEAR ENDED 31 DECEMBER 2020

25. FINANCIAL INSTRUMENTS

The main risks arising from the Bank's financial instruments in the normal course of business are operational risk, credit risk, market risk and liquidity risk.

The Bank does not use derivative financial instruments such as foreign exchange contract and interest rate swaps to manage its risk exposures.

These risks are limited by the Bank's financial management policies and practices described below.

25.1 FINANCIAL RISK MANAGEMENT POLICIES

The Bank's policies in respect of the major areas of treasury activity are as follows:-

(a) Operational risk

Operational risk is the risk of direct or indirect loss arising from inadequate or failed internal processes, personnel, technology and infrastructure, and from external factors other than credit, market and liquidity risks such as those arising from legal and regulatory requirements and generally accepted standards of corporate behavior.

The operational risk losses is managed through established operational risk management processes, proper monitoring and reporting of the business activities by control and support units which are independent of the business units and oversight provided by the senior management of the Bank.

The Bank's operational risk management entails the establishment of clear organisational structures, roles and control policies. Various internal control policies and measures have been implemented including the establishment of signing authorities, defining system parameters controls, streamlining procedures and documentation and compliance with regulatory and other legal requirements.

(b) Credit risk

Credit risk is the potential loss of revenue and principal losses in the form of specific provisions as a result of defaults by the borrowers or counterparties through its lending and investing activities.

The primary exposure to credit risk arises through its loans to customers. The amount of credit exposure in this regard is represented by the carrying amounts of the assets on the statement of financial position. The lending activities are guided by the Bank's credit policy to ensure that the overall objectives in the area of lending are achieved; i.e., that the loans portfolio is strong and healthy and credit risks are well diversified. The credit policy documents the lending policy, collateral policy and credit approval processes and procedures implemented to ensure compliance with NBC Guidelines.

The Bank holds collateral against loans to customers in the form of mortgage interests over property and guarantees. Estimates of fair value are based on the value of collateral assessed at the time of borrowing, and generally are not updated except when a loan is individually assessed as doubtful.

SOUTHERN CAPITAL SPECIALIZED BANK PLC.

(Incorporated in Cambodia)

Registration No: 00011446

NOTES TO THE FINANCIAL STATEMENTS FOR THE FINANCIAL YEAR ENDED 31 DECEMBER 2020

25. FINANCIAL INSTRUMENTS (CONT'D)

25.1 FINANCIAL RISK MANAGEMENT POLICIES (CONT'D)

(b) Credit risk (Cont'd)

(i) Credit risk measurement (Cont'd)

The measurement of expected credit loss allowance under the CIFRS 9's three-stage approach is to recognise lifetime expected credit loss allowance for financial instrument for which there has been a significant increase in credit risk since initial origination or is credit-impaired as at the reporting date. The financial instrument which has not undergone any significant deterioration in credit risk shall be recognised with 12-month expected credit loss allowance.

Under the three-stage approach, the financial instrument is allocated into three stages based on the relative movement in the credit risk.

- Stage 1 includes financial instruments that neither have a significant increase in credit risk since initial recognition nor credit-impaired as at reporting date. For these assets, 12-month expected credit loss allowance are recognised.
- Stage 2 includes financial instruments that have had a significant increase in credit risk since initial recognition but do not have objective evidence of impairment. For these assets, lifetime expected credit loss allowance are recognised.
- Stage 3 includes financial instruments that have objective evidence of impairment at the reporting date. For these assets, lifetime expected credit loss allowance are recognised.
- Purchased or originated credit-impaired financial assets are those financial assets that are credit-impaired on initial recognition. Their expected credit loss allowance is always measured on a lifetime basis (Stage 3).

SOUTHERN CAPITAL SPECIALIZED BANK PLC.

(Incorporated in Cambodia)

Registration No: 00011446

NOTES TO THE FINANCIAL STATEMENTS FOR THE FINANCIAL YEAR ENDED 31 DECEMBER 2020

25. FINANCIAL INSTRUMENTS (CONT'D)

25.1 FINANCIAL RISK MANAGEMENT POLICIES (CONT'D)

(b) Credit risk (Cont'd)

(i) Credit risk measurement (Cont'd)

The key judgements and assumptions adopted by the Bank in addressing the requirements of the standard on the measurement of allowances are:-

(1) Significant increase in credit risk ("SICR")

The assessment of SICR shall be a multifactor and holistic analysis and based on a mixture of quantitative and/or qualitative information. To determine whether the risk of default of a loan has increased significantly since initial recognition, the current risk of default at the reporting date is compared with the risk of default at initial recognition.

(2) Definition of credit impaired

Loans and advances

The Bank classified a loan and advances as impaired when it meets one or more of the following criteria:-

- The principal or interest or both of the loan is past due for more than 3 months for short term loans and 1 year for long term loans;
- The loan is forced impaired due to various reasons, such as bankruptcy;
- The loan is classified as "Loss" as per NBC's requirement.

SOUTHERN CAPITAL SPECIALIZED BANK PLC.

(Incorporated in Cambodia)

Registration No: 00011446

NOTES TO THE FINANCIAL STATEMENTS FOR THE FINANCIAL YEAR ENDED 31 DECEMBER 2020

25. FINANCIAL INSTRUMENTS (CONT'D)

25.1 FINANCIAL RISK MANAGEMENT POLICIES (CONT'D)

(b) Credit risk (Cont'd)

(i) Credit risk measurement (Cont'd)

The key judgements and assumptions adopted by the Bank in addressing the requirements of the standard on the measurement of allowances are (Cont'd):-

(3) Definition of default

Loans and advances

The Bank defines a financial instrument as in default when it meets one or more of the following criteria:-

- Credit-impaired;
- Write-off/charged-off accounts.

(4) Measuring ECL – inputs, assumptions and estimation techniques

The ECL is measured on either a 12-month or Lifetime basis depending on whether a significant increase in credit risk has occurred since initial recognition or whether an asset is considered to be credit-impaired. The 12-month or Lifetime ECL reflects multiple forward-looking scenarios and is weighted based on the probability of occurrence for each scenario. The ECL can be assessed and measured either on collective or individual basis.

For collective assessment, the ECL is determined by projecting the Probability of Default ("PD"), Loss Given Default ("LGD") and Exposure at Default ("EAD") for each future month and for each individual exposure or collective segment. The three components are multiplied together to calculate an ECL for each future month, which is then discounted back to the reporting date and summed. The discount rate used in the ECL calculation is the original effective interest rate or an approximation thereof.

For individual assessment, the ECL allowance is determined by comparing the outstanding exposure with the present value of cash flow which is expected to be received from the borrower.

Probability of Default

The PD represents the likelihood of a borrower will be unable to meet its financial obligation either over the next 12 months (12-month PD) or over the remaining lifetime (Lifetime PD) of the obligation.

SOUTHERN CAPITAL SPECIALIZED BANK PLC.

(Incorporated in Cambodia)

Registration No: 00011446

NOTES TO THE FINANCIAL STATEMENTS FOR THE FINANCIAL YEAR ENDED 31 DECEMBER 2020

25. FINANCIAL INSTRUMENTS (CONT'D)

25.1 FINANCIAL RISK MANAGEMENT POLICIES (CONT'D)

(b) Credit risk (Cont'd)

(i) Credit risk measurement (Cont'd)

The key judgements and assumptions adopted by the Bank in addressing the requirements of the standard on the measurement of allowances are (Cont'd):-

(4) Measuring ECL – inputs, assumptions and estimation techniques (Cont'd)

Probability of Default (Cont'd)

The PD is derived based on the modelling approach of which statistical analysis and expert judgement was performed to identify the risk parameters which correlate with the historical observed default. The model relies on the risk parameters and its correlation with the historical observed default to predict the 12-month PD. The Lifetime PD is developed using forecasted MEV with the application of survival probabilities up to maturity of the loan facility.

Exposure at Default

EAD is the total amount that the Bank is exposed to at the time the borrower defaults.

The 12-month and lifetime EADs are determined based on the expected payment profile. For amortising products and bullet repayment loans, this is based on the contractual repayments owed by the borrower over a 12-month or remaining maturity.

Loss Given Default

LGD represents the Bank's expectation of the extent of loss on a defaulted exposure. LGD varies by type of counterparty, type and seniority of claim and availability of collateral or other credit support. LGD is expressed as a percentage loss per unit of exposure at the time of default.

SOUTHERN CAPITAL SPECIALIZED BANK PLC.

(Incorporated in Cambodia)

Registration No: 00011446

NOTES TO THE FINANCIAL STATEMENTS FOR THE FINANCIAL YEAR ENDED 31 DECEMBER 2020

25. FINANCIAL INSTRUMENTS (CONT'D)

25.1 FINANCIAL RISK MANAGEMENT POLICIES (CONT'D)

(b) Credit risk (Cont'd)

(i) Credit risk measurement (Cont'd)

The key judgements and assumptions adopted by the Bank in addressing the requirements of the standard on the measurement of allowances are (Cont'd):-

(4) Measuring ECL – inputs, assumptions and estimation techniques (Cont'd)

Loss Given Default (Cont'd)

The 12-month and lifetime LGDs are determined based on the factors which impact the recoveries made post default. These vary by product type.

- For secured products, this is primarily based on collateral type and projected collateral values, historical discounts to market/book values due to forced sales, time to repossession and recovery costs observed.
- For unsecured products, LGD's are typically set at product level due to the limited differentiation in recoveries achieved across different borrowers. These LGD's are influenced by collection strategies, including contracted debt sales and price.

The assumptions underlying the ECL calculation are monitored and reviewed periodically. There have been no significant changes in estimation techniques or significant assumptions made during the reporting period.

(5) Forward-looking information incorporated into the ECL models

The estimation of ECL incorporates forward-looking information. The Bank has performed statistical analysis based on historical experience and identified the key economic variables impacting credit risk and expected credit losses for each portfolio. The relationship of these economic variables on the PD, EAD and LGD has been determined by performing statistical regression analysis to understand the impact changes in these variables have had historically on default rates and on the components of PD and LGD. These economic variables and their associated impact on the PD, EAD and LGD vary by financial instrument. Expert judgement has also been applied in this process.

SOUTHERN CAPITAL SPECIALIZED BANK PLC.

(Incorporated in Cambodia)

Registration No: 00011446

NOTES TO THE FINANCIAL STATEMENTS

FOR THE FINANCIAL YEAR ENDED 31 DECEMBER 2020

25. FINANCIAL INSTRUMENTS (CONT'D)

25.1 FINANCIAL RISK MANAGEMENT POLICIES (CONT'D)

(b) Credit risk (Cont'd)

(i) Credit risk measurement (Cont'd)

The key judgements and assumptions adopted by the Bank in addressing the requirements of the standard on the measurement of allowances are (Cont'd):-

(5) Forward-looking information incorporated into the ECL models (Cont'd)

As with any economic forecasts, the projections and likelihoods of occurrence are subject to some degree of inherent uncertainty and therefore the actual outcomes may be different to those projected. The Bank considers these forecasts to represent its best estimate of the possible outcomes and are appropriately representative of the range of possible scenarios. The scenario weightage, number of scenarios and their attributes are reassessed periodically.

(6) Grouping of exposure for ECL measured on collective basis

For expected credit loss provisions modelled on a collective basis, a grouping of exposures is performed on the basis of shared risk characteristics, such that risk exposures within a group are homogeneous.

In performing this grouping, there must be sufficient information for the group to be statistically credible. Where sufficient information is not available internally, the Bank has considered benchmarking internal/external supplementary data to use for modelling purposes.

The appropriateness of groupings is monitored and reviewed on a periodic basis.

(ii) Risk limit control and mitigation policies

The Bank operates and provides loans and advances to individuals or enterprises within the Kingdom of Cambodia. The Bank manages limits and controls concentration of credit risk whenever they are identified.

The Bank employs a range of policies and practices to mitigate credit risk. The most traditional of these is the taking of security in the form of collateral for loans to customers, which is common practice. The Bank implements guidelines on the acceptability of specific classes of collateral or credit risk mitigation. The principal collateral types secured for loans to customers are:-

- Mortgages over residential properties (land, building and other properties);
- Charges over business assets such as land and buildings; and
- Cash in the form of margin deposits.

SOUTHERN CAPITAL SPECIALIZED BANK PLC.

(Incorporated in Cambodia)

Registration No: 00011446

NOTES TO THE FINANCIAL STATEMENTS FOR THE FINANCIAL YEAR ENDED 31 DECEMBER 2020

25. FINANCIAL INSTRUMENTS (CONT'D)

25.1 FINANCIAL RISK MANAGEMENT POLICIES (CONT'D)

(b) Credit risk (Cont'd)

(iii) Impairment and provisioning policies

The Bank is required to follow the mandatory credit classification and provisioning in accordance with Prakas B7-017-344 and B7-018-001 dated 1 December 2017 and 16 February 2018 respectively on loan classification and provisioning. The impairment policy is set out in Note 4.8(a).

At each reporting date, the Bank assesses whether any of financial assets at amortised cost are credit impaired.

Loans and advances

The Bank applies the 3-stage general approach to measuring expected credit losses for loans and advances.

The calculation of expected loss rates are based on the estimation techniques mentioned in Note 25.1(b)(i).

Generally, the Bank considers loans and advances to related parties have low credit risks. The Bank assumes that there is a significant increase in credit risk when a related parties' financial position deteriorates significantly. As the Bank is able to determine the timing of payments of the related parties' loans and advances when they are payable, the Bank considers the loans and advances to be in default when the subsidiaries are not able to pay when demanded. The Bank considers a related party's loan or advance to be credit impaired when the subsidiary is unlikely to repay its loan or advance in full or the subsidiary is continuously loss making or the subsidiary is having a deficit in its total equity.

The Bank determines the probability of default for these loans and advances individually using internal and external information available.

SOUTHERN CAPITAL SPECIALIZED BANK PLC.

(Incorporated in Cambodia)

Registration No: 00011446

NOTES TO THE FINANCIAL STATEMENTS FOR THE FINANCIAL YEAR ENDED 31 DECEMBER 2020

25. FINANCIAL INSTRUMENTS (CONT'D)

25.1 FINANCIAL RISK MANAGEMENT POLICIES (CONT'D)

(b) Credit risk (Cont'd)

(iii) Impairment and provisioning policies (Cont'd)

Loans and advances (Cont'd)

The information about the exposure to credit risk and the loss allowances calculated under CIFRS 9 for loans and advances are summarised below:-

| | Gross Amount USD | 12-month ECL (Stage 1) USD | Lifetime ECL - not credit impaired (Stage 2) USD | Lifetime ECL - credit impaired (Stage 3) USD | Carrying amount USD |
|--------------------------|---------------------|----------------------------------|---|---|------------------------|
| <u>31.12.2020</u> | | | | | |
| 1 – 30 days past due | 11,197,689 | (299,933) | - | - | 10,897,756 |
| 30 – 90 days past due | 295,818 | - | - | - | 295,818 |
| more than 90 days | 416,527 | - | - | (369,789) | 46,738 |
| | 11,910,034 | (299,933) | - | (369,789) | 11,240,312 |
| <u>31.12.2019</u> | | | | | |
| 1 – 30 days past due | 9,735,392 | (367,976) | - | - | 9,367,416 |
| 30 – 90 days past due | - | - | - | - | - |
| more than 90 days | 673,746 | - | - | (673,746) | - |
| | 10,409,138 | (367,976) | - | (673,746) | 9,367,416 |

SOUTHERN CAPITAL SPECIALIZED BANK PLC.

(Incorporated in Cambodia)

Registration No: 00011446

NOTES TO THE FINANCIAL STATEMENTS FOR THE FINANCIAL YEAR ENDED 31 DECEMBER 2020

25. FINANCIAL INSTRUMENTS (CONT'D)

25.1 FINANCIAL RISK MANAGEMENT POLICIES (CONT'D)

(b) Credit risk (Cont'd)

(iii) Impairment and provisioning policies (Cont'd)

Loans and advances (Cont'd)

The information about the exposure to credit risk and the loss allowances calculated under CIFRS 9 for loans and advances are summarised below (Cont'd):-

| | Gross Amount KHR'000 | 12-month ECL (Stage 1) KHR'000 | Lifetime ECL - not credit impaired (Stage 2) KHR'000 | Lifetime ECL - credit impaired (Stage 3) KHR'000 | Carrying amount KHR'000 |
|--------------------------|-------------------------|--------------------------------------|---|---|----------------------------|
| <u>31.12.2020</u> | | | | | |
| 1 – 30 days past due | 45,294,652 | (1,213,229) | - | - | 44,081,423 |
| 30 – 90 days past due | 1,196,584 | - | - | - | 1,196,584 |
| more than 90 days | 1,684,850 | - | - | (1,495,795) | 189,055 |
| | 48,176,086 | (1,213,229) | - | (1,495,795) | 45,467,062 |
| <u>31.12.2019</u> | | | | | |
| 1 – 30 days past due | 39,664,369 | (1,492,137) | - | - | 38,172,232 |
| 30 – 90 days past due | - | - | - | - | - |
| more than 90 days | 2,732,029 | - | - | (2,732,029) | - |
| | 42,396,398 | (1,492,137) | - | (2,732,029) | 38,172,232 |

SOUTHERN CAPITAL SPECIALIZED BANK PLC.

(Incorporated in Cambodia)

Registration No: 00011446

NOTES TO THE FINANCIAL STATEMENTS FOR THE FINANCIAL YEAR ENDED 31 DECEMBER 2020

25. FINANCIAL INSTRUMENTS (CONT'D)

25.1 FINANCIAL RISK MANAGEMENT POLICIES (CONT'D)

(b) Credit risk (Cont'd)

(iii) Impairment and provisioning policies (Cont'd)

The movement in the loss allowances in respect of loans and advances are disclosed in Note 7.

Other assets

Other assets are also subject to the impairment requirements of CIFRS 9, the identified impairment loss was immaterial and hence, it is not provided for.

Fixed Deposits with Licensed Banks, Cash and Bank Balances

The Bank considers these banks and financial institutions have low credit risks. Therefore, the Bank is of the view that the loss allowance is immaterial and hence, it is not provided for.

(iv) Maximum exposure to credit risk before collateral held or other credit enhancements

The credit exposure arising from on and off balance sheet activities are as follows:-

| | 31.12.2020 USD | 31.12.2019 USD | 31.12.2020 KHR'000 | 31.12.2019 KHR'000 |
|---|-------------------|-------------------|-----------------------|-----------------------|
| Credit risks exposures relating to on-balance sheet assets:- | | | | |
| Bank balances – gross | 3,521,407 | 4,806,893 | 14,244,092 | 19,588,089 |
| Loans and advances – gross | 11,910,034 | 10,409,138 | 48,176,088 | 42,417,238 |
| Other assets | 162,767 | 139,632 | 658,393 | 569,001 |
| | <u>15,594,208</u> | <u>15,355,663</u> | <u>63,078,573</u> | <u>62,574,328</u> |
| Credit risks exposures relating to off-balance sheet items:- | | | | |
| Unused portion of credit facilities | - | - | - | - |
| Total maximum credit risk exposure | <u>15,594,208</u> | <u>15,355,663</u> | <u>63,078,573</u> | <u>62,574,328</u> |

SOUTHERN CAPITAL SPECIALIZED BANK PLC.

(Incorporated in Cambodia)

Registration No: 00011446

NOTES TO THE FINANCIAL STATEMENTS FOR THE FINANCIAL YEAR ENDED 31 DECEMBER 2020

25. FINANCIAL INSTRUMENTS (CONT'D)

25.1 FINANCIAL RISK MANAGEMENT POLICIES (CONT'D)

(b) Credit risk (Cont'd)

(v) Exposure to credit risk

At the end of the reporting period, the maximum exposure to credit risk is represented by the carrying amount of each class of financial assets recognised in the statement of financial position of the Bank after deducting any allowance for impairment losses (where applicable).

Loans with renegotiated terms/restructured loans

Loans with renegotiated terms are loans that have been rescheduled or refinanced in accordance with an agreement setting forth a new repayment schedule on a periodic basis occasioned by weaknesses in the borrower's financial condition and/or inability to repay the loan as originally agreed. Loans to be restructured are analyzed on the basis of the business prospects and repayment capacity of the borrower according to new cash flow projections supported by updated business perspectives and overall market conditions being based on realistic and prudent assumptions.

Once the loan is restructured it remains in the same category independent of satisfactory performance after restructuring. The classification is not improved unless there are no arrears in repayment of principal and interest within 3 installment periods and within a period of not less than 3 months.

Write-off policy

In compliance with NBC Guidelines, the Bank shall remove a loan/advance or a portion of a loan from its balance sheet when the Bank loses control of the contractual rights over the loan or when all or part of a loan is deemed uncollectible; or there is no realistic prospect of recovery.

Collateral

The Bank holds collateral against loans and advances in the form of mortgage interests over property and/or guarantees. Estimates of fair value are based on the value of collateral assessed on an annual basis. There were no non-financial assets obtained by the Bank during the year by taking possession of collateral held as security against loans and advances. The repossessed properties have to be sold within one year as the required by the NBC Guidelines and are classified in the statement of financial position as foreclosed property.

Concentration of credit risk

The analysis of concentrations of credit risk from loans and advances at the balance date is shown in Note 7 to the financial statements.

SOUTHERN CAPITAL SPECIALIZED BANK PLC.

(Incorporated in Cambodia)

Registration No: 00011446

NOTES TO THE FINANCIAL STATEMENTS FOR THE FINANCIAL YEAR ENDED 31 DECEMBER 2020

25. FINANCIAL INSTRUMENTS (CONT'D)

25.1 FINANCIAL RISK MANAGEMENT POLICIES (CONT'D)

(c) Market Risk

Market risk is the risk of loss arising from adverse movement in the level of market prices or rates, the two key components being foreign currency exchange risk and interest rate risk. Market risk arising from the trading activities is controlled by marking to market the trading positions against their predetermined market risk limits.

(i) Foreign currency risk

Foreign currency exchange risk refers to the adverse exchange rate movements on foreign currency exchange positions taken from time to time. The Bank maintains a policy of not exposing itself to large foreign exchange positions. Any foreign currency exchange open positions are monitored against the operating requirements, predetermined position limits and cut-loss limits.

Foreign exchange risk arises from future commercial transactions and recognized assets and liabilities denominated in a currency that is not the Bank's functional currency.

The Bank's exposure to foreign currency exchange rate risk at 31 December 2020 and at 31 December 2019 is disclosed in the respective notes to the financial statements.

Any reasonably possible change in the foreign currency exchange rates at the end of the reporting period against the functional currencies of the Bank does not have a material impact on the profit/loss after taxation and other comprehensive income of the Bank and hence, no sensitivity analysis is presented.

(ii) Interest rate risk

Interest rate risk refers to the volatility in net interest income as a result of changes in the levels of interest rate and shifts in the composition of the assets and liabilities. Interest rate risk is managed through close monitoring of returns on investment, market pricing, cost of funds and through interest rate sensitivity gap analysis. The potential reduction in net interest income from an unfavorable interest rate movement is monitored against the risk tolerance limits set.

The Bank's exposure to interest rate risk based on the carrying amounts of the financial instruments at the end of the reporting period is disclosed in respective notes to the financial statements.

SOUTHERN CAPITAL SPECIALIZED BANK PLC.

(Incorporated in Cambodia)

Registration No: 00011446

NOTES TO THE FINANCIAL STATEMENTS FOR THE FINANCIAL YEAR ENDED 31 DECEMBER 2020

25. FINANCIAL INSTRUMENTS (CONT'D)

25.1 FINANCIAL RISK MANAGEMENT POLICIES (CONT'D)

(c) Market Risk (Cont'd)

(ii) Interest rate risk (Cont'd)

Fair value sensitivity analysis for fixed rate instruments

The Bank does not account for any fixed rate financial assets and liabilities at fair value through profit or loss, and the Bank does not have derivatives as at the year end. Therefore, a change in interest rates at the reporting date would not affect profit or loss.

Sensitivity analysis for floating rate instruments

The Bank does not have significant floating rate instruments. Any reasonably possible change in the interest rates of floating rate instruments at the end of the reporting period does not have a material impact on the profit after taxation and other comprehensive income of the Bank and hence, no sensitivity analysis is presented.

(iii) Equity price risk

The Bank does not have any quoted investments and hence is not exposed to equity price risk.

(d) Liquidity Risk

Liquidity risk relates to the ability to maintain sufficient liquid assets to meet its financial commitments and obligations when they fall due at a reasonable cost.

In addition to full compliance of all liquidity requirements, the management of the Bank closely monitors all inflows and outflows and the maturity gaps through periodical reporting. Movements in loans and customers' deposits are monitored and liquidity requirements adjusted to ensure sufficient liquid assets to meet its financial commitments and obligations as and when they fall due.

SOUTHERN CAPITAL SPECIALIZED BANK PLC.

(Incorporated in Cambodia)

Registration No: 00011446

NOTES TO THE FINANCIAL STATEMENTS FOR THE FINANCIAL YEAR ENDED 31 DECEMBER 2020

25. FINANCIAL INSTRUMENTS (CONT'D)

25.1 FINANCIAL RISK MANAGEMENT POLICIES (CONT'D)

(d) Liquidity Risk (Cont'd)

Maturity Analysis

The following table sets out the maturity profile of the financial liabilities at the end of the reporting period based on contractual undiscounted cash flows (including interest payments computed using contractual rates or, if floating, based on the rates at the end of the reporting period):-

| | Weighted Average Effective Interest Rate % | Carrying Amount USD | Contractual undiscounted cash flow USD | Within 1 Year USD | 1 - 5 Years USD | Over 5 Years USD |
|---|---|---------------------------|---|-------------------------|-----------------------|---------------------------|
| <u>31.12.2020</u> | | | | | | |
| <u>Non-derivative Financial Liabilities</u> | | | | | | |
| Other liabilities | | 43,204 | 43,204 | 43,204 | - | - |
| Lease liabilities | 8% | - | - | - | - | - |
| | | <u>43,204</u> | <u>43,204</u> | <u>43,204</u> | <u>-</u> | <u>-</u> |
| <u>31.12.2019</u> | | | | | | |
| <u>Non-derivative Financial Liabilities</u> | | | | | | |
| Other liabilities | | 38,335 | 38,335 | 38,335 | - | - |
| Lease liabilities | 8% | 15,348 | 15,972 | 15,972 | 15,972 | - |
| | | <u>53,683</u> | <u>54,307</u> | <u>54,307</u> | <u>15,972</u> | <u>-</u> |

SOUTHERN CAPITAL SPECIALIZED BANK PLC.

(Incorporated in Cambodia)

Registration No: 00011446

NOTES TO THE FINANCIAL STATEMENTS FOR THE FINANCIAL YEAR ENDED 31 DECEMBER 2020

25. FINANCIAL INSTRUMENTS (CONT'D)

25.1 FINANCIAL RISK MANAGEMENT POLICIES (CONT'D)

(d) Liquidity Risk (Cont'd)

Maturity Analysis (Cont'd)

The following table sets out the maturity profile of the financial liabilities at the end of the reporting period based on contractual undiscounted cash flows (including interest payments computed using contractual rates or, if floating, based on the rates at the end of the reporting period) (Cont'd):-

| | Weighted Average Effective Interest Rate % | Carrying Amount KHR'000 | Contractual undiscounted cash flow KHR'000 | Within 1 Year KHR'000 | 1 - 5 Years KHR'000 | Over 5 Years KHR'000 |
|---|---|-------------------------------|---|-----------------------------|---------------------------|-------------------------------|
| <u>31.12.2020</u> | | | | | | |
| <u>Non-derivative Financial Liabilities</u> | | | | | | |
| Other liabilities | | 174,756 | 174,756 | 174,756 | - | - |
| Lease liabilities | 8% | - | - | - | - | - |
| | | <u>174,756</u> | <u>174,756</u> | <u>174,756</u> | <u>-</u> | <u>-</u> |
| <u>31.12.2019</u> | | | | | | |
| <u>Non-derivative Financial Liabilities</u> | | | | | | |
| Other liabilities | | 156,215 | 156,215 | 156,215 | - | - |
| Lease liabilities | 8% | 62,543 | 65,086 | 65,086 | - | - |
| | | <u>218,758</u> | <u>221,301</u> | <u>221,301</u> | <u>-</u> | <u>-</u> |

SOUTHERN CAPITAL SPECIALIZED BANK PLC.

(Incorporated in Cambodia)

Registration No: 00011446

NOTES TO THE FINANCIAL STATEMENTS FOR THE FINANCIAL YEAR ENDED 31 DECEMBER 2020

25. FINANCIAL INSTRUMENTS (CONT'D)

25.2 CAPITAL RISK MANAGEMENT

(a) Regulatory Capital

The Bank's objectives when managing capital, which is a broader concept than the 'equity' on the face of the statement of financial position, are:-

- To comply with the capital requirements set by the NBC;
- To safeguard the Bank's ability to continue as a going concern so that it can continue to provide returns for shareholders and benefits for other stakeholders; and
- To maintain a strong capital base to support the development of the business.

The NBC requires all the Banks to (i) fulfill the minimum capital requirements, and (ii) comply with solvency, liquidity and other requirements.

(b) Capital allocation

The allocation of capital between specific operations and activities is, to a large extent, driven by optimisation of the return achieved on the capital allocated. The amount of capital allocated to each operation or activity is based primarily upon the regulatory capital.

There was no change in the Bank's approach to capital management during the financial year.

SOUTHERN CAPITAL SPECIALIZED BANK PLC.

(Incorporated in Cambodia)

Registration No: 00011446

NOTES TO THE FINANCIAL STATEMENTS FOR THE FINANCIAL YEAR ENDED 31 DECEMBER 2020

25. FINANCIAL RISK MANAGEMENT POLICIES (CONT'D)

25.3 CLASSIFICATION OF FINANCIAL INSTRUMENTS

| | 31.12.2020 USD | 31.12.2019 USD | 31.12.2020 KHR'000 | 31.12.2019 KHR'000 |
|---|-------------------|-------------------|-----------------------|-----------------------|
| Financial assets | | | | |
| <u>Amortised Cost</u> | | | | |
| Cash on hand | 1,315 | 7,752 | 5,319 | 31,589 |
| Deposits and placements with banks and other financial institutions | 3,517,957 | 4,758,991 | 14,230,136 | 19,392,888 |
| Loans and advances | 11,240,312 | 9,367,416 | 45,467,062 | 38,172,232 |
| Other assets | 162,767 | 139,632 | 658,393 | 569,001 |
| Statutory deposits with NBC | 750,000 | 750,000 | 3,033,750 | 3,056,250 |
| | <u>15,672,351</u> | <u>15,023,791</u> | <u>63,394,660</u> | <u>61,221,960</u> |
| Financial liabilities | | | | |
| <u>Amortised Cost</u> | | | | |
| Other liabilities | 43,204 | 38,335 | 174,760 | 156,215 |
| | <u>43,204</u> | <u>38,335</u> | <u>174,760</u> | <u>156,215</u> |

25.4 GAINS OR LOSSES ARISING FROM FINANCIAL INSTRUMENTS

| | 2020 USD | 2019 USD | 2020 KHR'000 | 2019 KHR'000 |
|---------------------------------------|-------------|-------------|-----------------|-----------------|
| Financial assets | | | | |
| <u>Amortised Cost</u> | | | | |
| Net gain recognised in profit or loss | 1,524,296 | 754,912 | 6,165,777 | 3,058,904 |

25.5 FAIR VALUE INFORMATION

The fair values of the financial assets and financial liabilities of the Bank which are maturing within the next 12 months approximated their carrying amounts due to the relatively short-term maturity of the financial instruments or repayable on demand terms.



No. 294 Mao Tse Toung Blvd
Unit 5 - 6 Regency Complex B
Phnom Penh, Cambodia
Tel: (855) 23 - 22 68 68
Email: info@scb-bank.com